

## Human Fibronectin, His Tag, E. coli

<b>Catalog Number</b>	LDG193PHE
<b>Package</b>	5 µg / 20 µg / 100 µg / 1 mg / Customized package

For full product information, images and publications, please visit [our website](#).



### Specifications

#### Species of Origin

Human

#### Affinity Tag

His Tag (C-term)

#### Purity

>95% as determined by SDS-PAGE analysis.

#### Activity

Measured by the ability of the immobilized protein to support the adhesion of B16-F1 mouse melanoma cells. The ED50 for this effect is <100 ng/mL.

#### Mycoplasma

Not detected

#### Expression system

Escherichia coli

#### Buffer

Lyophilized from a 0.2 µm filtered solution of 50 mM Tris, 150 mM NaCl, pH 8.0

#### Molecular weight

The protein has a calculated MW of 64 kDa. The protein migrates as 60-65 kDa under reducing condition (SDS-PAGE analysis).

#### Endotoxin level

<0.1 EU per 1 µg of the protein by the LAL method.

#### Form

Lyophilized

### Background

#### Tainan Headquarter

+886-6-2536677

bd@leadgene.com.tw

#### Innovation & Research Center

+886-2-27065528

#### CLD Center

+886-6-2536677

**Background**

Fibronectin is a high-molecular-weight extracellular matrix glycoprotein involved in various cellular processes including adhesion, migration, growth, and differentiation. It plays crucial roles in wound healing, tissue repair, angiogenesis, and is implicated in cancer progression and fibrosis.

**Uniprot ID**

P02751-15

**Synonyms**

FN, FN1, CIG, FINC, FNZ, MSF, GFND, GFND2, LETS

**Sequence Note**

Pro1361 - Ser1637 & Ala1812 -Thr2107

**Instruction****Reconstitution**

It is recommended to reconstitute the lyophilized protein in sterile H<sub>2</sub>O to a concentration of 200 µg/mL and incubate the stock solution for at least 20 min to ensure sufficient re-dissolved.

**Stability & Storage**

This product is stable after storage at:

- -20°C for 12 months in lyophilized state from date of receipt.
- -20°C or -80°C for 1 month under sterile conditions after reconstitution.

Avoid repeated freeze/thaw cycles.

**Shipping**

The product is shipped with polar packs. Upon receipt, store it immediately at -20°C or lower for long term storage.

**Image****Tainan Headquarter**

+886-6-2536677

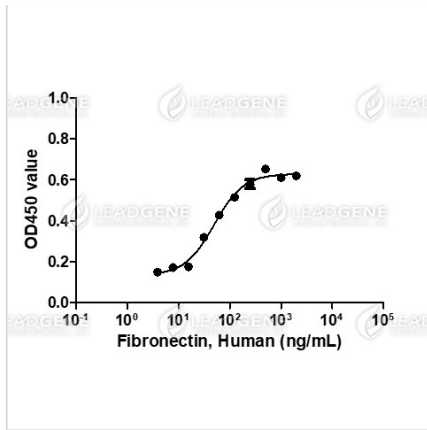
bd@leadgene.com.tw

**Innovation & Research Center**

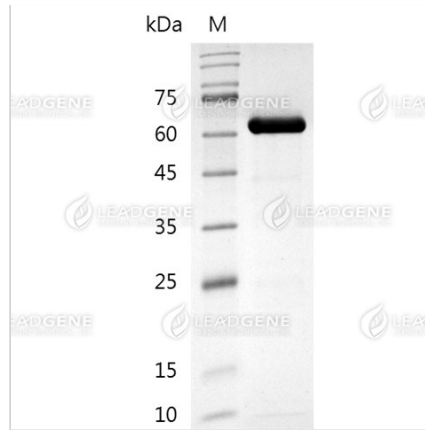
+886-2-27065528

**CLD Center**

+886-6-2536677



Activity analysis of recombinant Human Fibronectin, His Tag, E. coli. Measured by the ability of the immobilized protein to support the adhesion of B16-F1 mouse melanoma cells. The ED50 for this effect is <100 ng/mL.



SDS-PAGE analysis of recombinant human fibronectin protein.

**Disclaimer :** For Research Use or Further Manufacturing Only.