

Human CD22, His Tag, CHO

Catalog Number	LDG184PHM
Package	5 µg / 20 µg / 100 µg / Customized package

For full product information, images and publications, please visit [our website](#).



Specifications

Species of Origin

Human

Affinity Tag

His Tag (C-term)

Purity

>95% as determined by SDS-PAGE analysis.

Activity

Measured by the ability of the immobilized protein to support the adhesion of human red blood cells. The ED50 for this effect is <0.5 µg/mL.

Form

Lyophilized

Expression system

CHO

Buffer

Lyophilized from a 0.2 µm filtered solution of PBS, pH 7.4.

Molecular weight

The protein has a calculated MW of 75.98 kDa. The protein migrates as 90-120 kDa under reducing condition (SDS-PAGE analysis).

Endotoxin level

<0.1 EU per 1 µg of the protein by the LAL method.

Background

Tainan Headquarter

+886-6-2536677

bd@leadgene.com.tw

Innovation & Research Center

+886-2-27065528

CLD Center

+886-6-2536677

Background

CD22 is a B-cell-specific transmembrane glycoprotein belonging to the sialic acid-binding immunoglobulin-like lectin (Siglec) family. It functions as an inhibitory co-receptor that modulates B-cell receptor signaling, maintaining immune tolerance and preventing overactivation. CD22 is an important biomarker and therapeutic target in B-cell malignancies and autoimmune diseases.

Uniprot ID

P20273

Synonyms

Cluster of Differentiation 22, Siglec-2, B-cell receptor CD22, BL-CAM, B-lymphocyte cell adhesion molecule

Sequence Note

Met1-Arg687

Instruction

Reconstitution

It is recommended to reconstitute the lyophilized protein in sterile H₂O to a concentration of 200 µg/mL and incubate the stock solution for at least 20 min to ensure sufficient re-dissolved.

Stability & Storage

This product is stable after storage at:

- -20°C for 12 months in lyophilized state from date of receipt.
- -20°C or -80°C for 1 month under sterile conditions after reconstitution.

Avoid repeated freeze/thaw cycles.

Shipping

The product is shipped with polar packs. Upon receipt, store it immediately at -20°C or lower for long term storage.

Image

Tainan Headquarter

+886-6-2536677

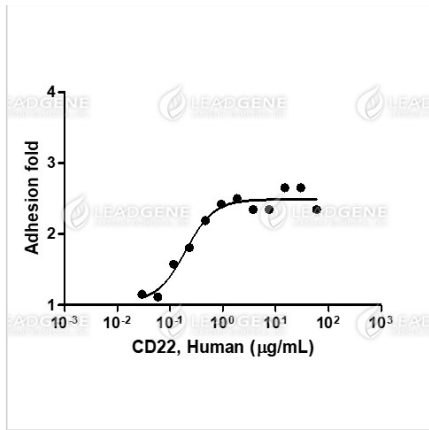
bd@leadgene.com.tw

Innovation & Research Center

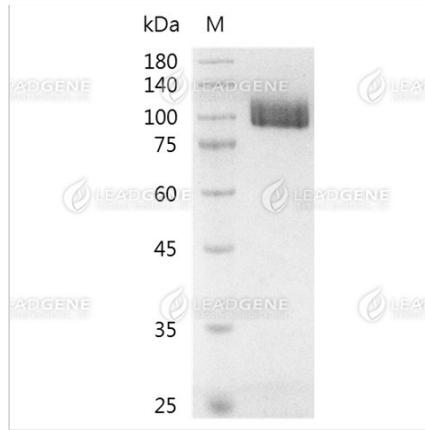
+886-2-27065528

CLD Center

+886-6-2536677



Activity analysis of recombinant Human CD22, His Tag, CHO. Measured by the ability of the immobilized protein to support the adhesion of human red blood cells. The ED50 for this effect is <0.5 µg/mL.



SDS-PAGE analysis of recombinant human CD22 protein.

Disclaimer : For Research Use or Further Manufacturing Only.