

Human CCL3, His Tag, E. coli

Catalog Number	LDG180PHE
Package	5 µg / 20 µg / 100 µg / Customized package

For full product information, images and publications, please visit [our website](#).



Specifications

Species of Origin

Human

Affinity Tag

His Tag (N-term)

Purity

>95% as determined by SDS-PAGE analysis.

Activity

Measure by its ability to chemoattract human THP1 cells using a concentration range of 1-10 ng/mL.

Form

Lyophilized

Expression system

Escherichia coli

Buffer

Lyophilized from a 0.2 µm filtered solution of PBS, pH 8.0.

Molecular weight

The protein has a calculated MW of 8.4 kDa.
The protein migrates as 8-11 kDa under reducing condition (SDS-PAGE analysis).

Endotoxin level

<0.1 EU per 1 µg of the protein by the LAL method.

Background

Tainan Headquarter

+886-6-2536677

bd@leadgene.com.tw

Innovation & Research Center

+886-2-27065528

CLD Center

+886-6-2536677

Background

C-C Motif Chemokine Ligand 3 (CCL3) is a 7.33Da cytokine with 66 amino acid residues. CCL3 is also called macrophage inflammatory protein 1-alpha (MIP-1-alpha) and is expressed in bone marrow and liver. Upon binding to the receptor, CCR1, CCR4, or CCR5, CCL3 plays an essential role in acute inflammatory responses like recruitment and activation of polymorphonuclear leukocytes and induction of monophasic fever. In addition, CCL3 participates in resistance to type 1 virus infection, mediation of MAPK signaling pathway, cell-cell signaling, and calcium-mediated signaling.

Uniprot ID

P10147

Synonyms

G0 /G1 switch regulatory protein 19-1, Macrophage inflammatory protein 1-alpha, MIP-1-alpha, PAT 464.1, SIS-beta, Small-inducible cytokine A3, Tonsillar lymphocyte LD78 alpha protein, C-C motif chemokine 3

Sequence Note

Ala27-Ala92

Instruction

Reconstitution

It is recommended to reconstitute the lyophilized protein in sterile H₂O to a concentration of 200 µg/mL and incubate the stock solution for at least 20 min to ensure sufficient re-dissolved.

Stability & Storage

This product is stable after storage at:

- -20°C for 12 months in lyophilized state from date of receipt.
- -20°C or -80°C for 1 month under sterile conditions after reconstitution.

Avoid repeated freeze/thaw cycles.

Shipping

The product is shipped with polar packs. Upon receipt, store it immediately at -20°C or lower for long term storage.

Image

Tainan Headquarter

+886-6-2536677

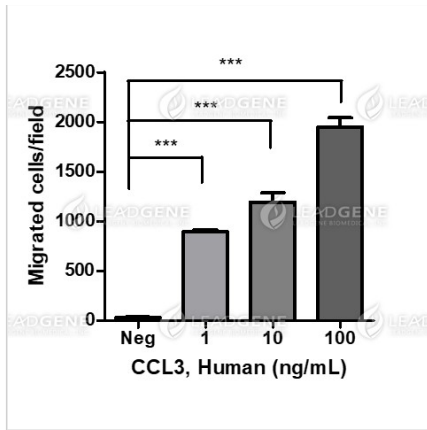
bd@leadgene.com.tw

Innovation & Research Center

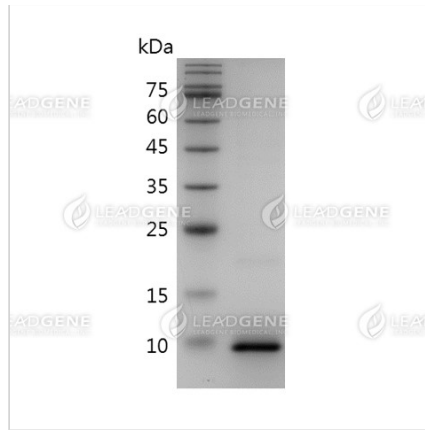
+886-2-27065528

CLD Center

+886-6-2536677



Activity analysis of recombinant Human CCL3, His Tag, E. coli. Measure by its ability to chemoattract human THP1 cells using a concentration range of 1-10 ng/mL.



SDS-PAGE analysis of recombinant human CCL3.

Disclaimer : For Research Use or Further Manufacturing Only.