

## Human G-CSF, His Tag, E. coli

<b>Catalog Number</b>	LDG170PHE
<b>Package</b>	5 µg / 20 µg / 100 µg / Customized package

For full product information, images and publications, please visit [our website](#).



### Specifications

#### Species of Origin

Human

#### Affinity Tag

His Tag (N-term)

#### Purity

>98% as determined by SDS-PAGE analysis.

#### Activity

Measure by its ability to induce proliferation in NFS-60 cells. The ED<sub>50</sub> for this effect is <0.5 ng/mL.

#### Form

Lyophilized

#### Expression system

Escherichia coli

#### Buffer

Lyophilized from a 0.2 µm filtered solution of PBS, pH 7.4.

#### Molecular weight

The protein has a calculated MW of 19.48 kDa. The protein migrates as 21kDa under reducing condition (SDS-PAGE analysis).

#### Endotoxin level

<0.1 EU per 1 µg of the protein by the LAL method.

### Background

#### Tainan Headquarter

+886-6-2536677

bd@leadgene.com.tw

#### Innovation & Research Center

+886-2-27065528

#### CLD Center

+886-6-2536677

### Background

Granulocyte colony-stimulating factor (G-CSF) is a member of the CSF family of glycoproteins and makes the bone marrow produce more white blood cells so it can reduce the risk of infection after some types of cancer treatment also is an established useful clinical agent for increasing neutrophilic granulocytes levels. G-CSF is a 18.67 kDa protein having 207 amino acid which secreted by monocytes, macrophages, fibroblasts, and endothelial cells, regulates cell growth, maturation, development of myeloid cells.

### Uniprot ID

# NP\_757373

### Synonyms

Granulocyte colony-stimulating factor

### Sequence Note

Thr31-Pro204

## Instruction

### Reconstitution

It is recommended to reconstitute the lyophilized protein in sterile H<sub>2</sub>O to a concentration of 200 µg/mL and incubate the stock solution for at least 20 min to ensure sufficient re-dissolved.

### Stability & Storage

This product is stable after storage at:

- -20°C for 12 months in lyophilized state from date of receipt.
- -20°C or -80°C for 1 month under sterile conditions after reconstitution.

Avoid repeated freeze/thaw cycles.

### Shipping

The product is shipped with polar packs. Upon receipt, store it immediately at -20°C or lower for long term storage.

## Image

### Tainan Headquarter

+886-6-2536677

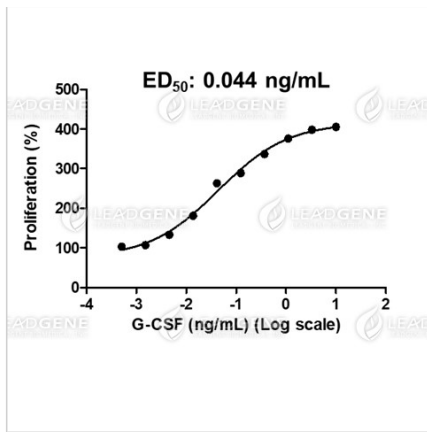
✉ bd@leadgene.com.tw

### Innovation & Research Center

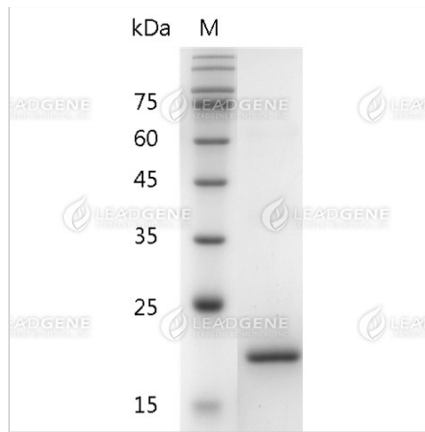
+886-2-27065528

### CLD Center

+886-6-2536677



Human G-CSF, His Tag, E. coli (LDG170PHE) induced NFS-60 cell proliferation, with the ED<sub>50</sub> at 44 pg/mL.



SDS-PAGE analysis of recombinant human G-CSF.

**Disclaimer :** For Research Use or Further Manufacturing Only.