

## Human VEGF165, His Tag, E. coli

<b>Catalog Number</b>	LDG168PHE
<b>Package</b>	5 µg / 20 µg / 100 µg / Customized package

For full product information, images and publications, please visit [our website](#).



### Specifications

#### Species of Origin

Human

#### Affinity Tag

His Tag (C-term)

#### Purity

>98% as determined by SDS-PAGE analysis.

#### Activity

Measure by its ability to induce HUVEC cells proliferation. The ED<sub>50</sub> for this effect is <12 ng/mL. The specific activity of recombinant human VEGF165 is approximately >5 x 10<sup>5</sup> IU/mg.

#### Form

Lyophilized

#### Expression system

Escherichia coli

#### Buffer

Lyophilized from a 0.2 µm filtered solution of PBS, pH 8.0.

#### Molecular weight

The protein has a calculated MW of 20.11 kDa. The protein migrates as 21 kDa under reducing condition (SDS-PAGE analysis).

#### Endotoxin level

<0.1 EU per 1 µg of the protein by the LAL method.

### Background

#### Tainan Headquarter

+886-6-2536677

bd@leadgene.com.tw

#### Innovation & Research Center

+886-2-27065528

#### CLD Center

+886-6-2536677

### Background

Vascular Endothelial Growth Factors 165(VEGF165) is a potent growth and angiogenic cytokine which belongs to the VEGF family, includes VEGF-A, VEGF-B, VEGF-C, VEGF-D, VEGF-E, and PlGF. Human VEGF165 is an abundant glycosylated cytokine composed of two identical 165 amino acid chains. Human VEGF165 plays an important role in embryonic vasculogenesis, angiogenesis and neurogenesis.

### Uniprot ID

# NP\_001165097

### Synonyms

Vascular permeability factor, VPF, Vascular endothelial Growth Factors A

### Sequence Note

Ala27-Arg191

## Instruction

### Reconstitution

It is recommended to reconstitute the lyophilized protein in sterile H<sub>2</sub>O to a concentration of 200 µg/mL and incubate the stock solution for at least 20 min to ensure sufficient re-dissolved.

### Stability & Storage

This product is stable after storage at:

- -20°C for 12 months in lyophilized state from date of receipt.
- -20°C or -80°C for 1 month under sterile conditions after reconstitution.

Avoid repeated freeze/thaw cycles.

### Shipping

The product is shipped with polar packs. Upon receipt, store it immediately at -20°C or lower for long term storage.

## Image

### Tainan Headquarter

+886-6-2536677

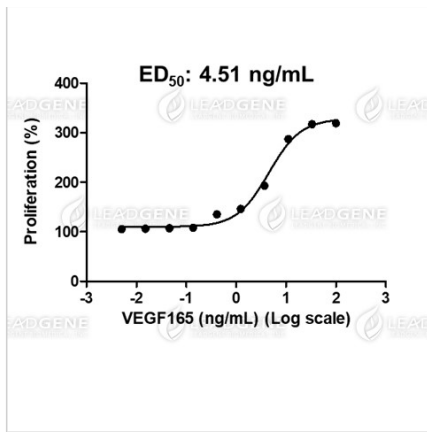
bd@leadgene.com.tw

### Innovation & Research Center

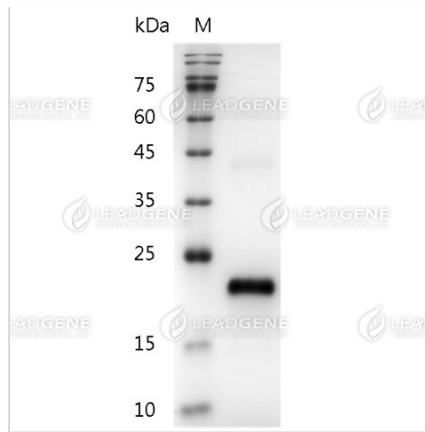
+886-2-27065528

### CLD Center

+886-6-2536677



Human VEGF165, His Tag, E. coli (LDG168PHE) induced HUVEC cell proliferation, with the ED<sub>50</sub> at 4.51 ng/mL.



SDS-PAGE analysis of recombinant human VEGF165.

**Disclaimer :** For Research Use or Further Manufacturing Only.