

Human CXCL13, His Tag, E. coli

Catalog Number LDG163PHE

Package 5 µg / 20 µg / 100 µg / Customized package

For full product information, images and publications, please visit [our website](#).



Specifications

Species of Origin

Human

Affinity Tag

His Tag (N-term)

Purity

>98% as determined by SDS-PAGE analysis.

Activity

Measure by its ability to chemoattract BaF3 cells transfected with human CXCR5. The ED₅₀ for this effect is <20 ng/mL.

Form

Lyophilized

Expression system

Escherichia coli

Buffer

Lyophilized from a 0.2 µm filtered solution of PBS, pH 7.4.

Molecular weight

The protein has a calculated MW of 9.49 kDa. The protein migrates as 11 kDa under reducing condition (SDS-PAGE analysis).

Endotoxin level

<0.1 EU per 1 µg of the protein by the LAL method.

Background

Tainan Headquarter

+886-6-2536677 +886-6-2531536

info@leadgene.com.tw

Taipei Office

+886-2-27065528

Background

C-X-C motif chemokine 13 (CXCL13) also named B lymphocyte chemoattractant (BLC), which is a chemokine of the intercrine alpha family. CXCL13 is a 7.9kDa protein containing 72 amino acid residues. CXCL13 is a chemotaxis for B lymphocyte. CXCL13 induces the cell proliferation through the AKT signal pathway which plays a key role in intestinal cancer model. CXCL13 /CXCR5 axis is highly expressed in gut, spleen and lymph nodes.

Uniprot ID

O43927.1

Synonyms

B cell-attracting chemokine 1, BCA-1, B lymphocyte chemoattractant, CXC chemokine BLC, Small-inducible cytokine B13, C-X-C motif chemokine 13

Sequence Note

Val23-Arg94

Instruction

Reconstitution

It is recommended to reconstitute the lyophilized protein in sterile H₂O to a concentration not less than 200 µg/mL and incubate the stock solution for at least 20 min to ensure sufficient re-dissolved.

Stability & Storage

This product is stable after storage at:

- -20°C for 12 months in lyophilized state from date of receipt.
- -20°C or -80°C for 1 month under sterile conditions after reconstitution.

Avoid repeated freeze/thaw cycles.

Shipping

The product is shipped with polar packs. Upon receipt, store it immediately at -20°C or lower for long term storage.

Image

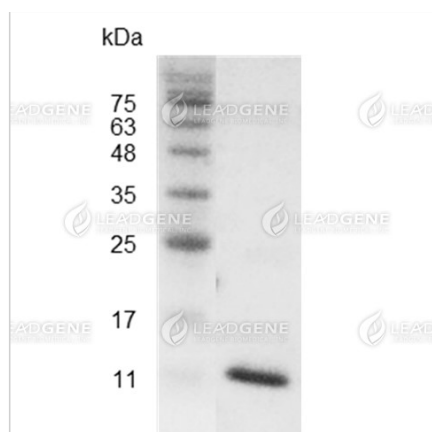
Tainan Headquarter

+886-6-2536677 +886-6-2531536

info@leadgene.com.tw

Taipei Office

+886-2-27065528



SDS-PAGE analysis of
recombinant human CXCL13.

Disclaimer : For Research Use or Further Manufacturing Only.

Tainan Headquarter

+886-6-2536677 +886-6-2531536

info@leadgene.com.tw

Taipei Office

+886-2-27065528