

## Human CXCL7, His Tag, E. coli

<b>Catalog Number</b>	LDG159PHE
<b>Package</b>	5 µg / 20 µg / 100 µg / Customized package

For full product information, images and publications, please visit [our website](#).



### Specifications

#### Species of Origin

Human

#### Affinity Tag

His Tag (N-term)

#### Purity

>98% as determined by SDS-PAGE analysis.

#### Activity

Measure by its ability to chemoattract human THP1 cells. Chemotactic activity was observed at a concentration of 10 ng/mL.

#### Form

Lyophilized

#### Expression system

Escherichia coli

#### Buffer

Lyophilized from a 0.2 µm filtered solution of PBS, pH 7.4.

#### Molecular weight

The protein has a calculated MW of 8.43 kDa. The protein migrates as 11 kDa under reducing condition (SDS-PAGE analysis).

#### Endotoxin level

<0.1 EU per 1 µg of the protein by the LAL method.

### Background

#### Tainan Headquarter

+886-6-2536677

bd@leadgene.com.tw

#### Innovation & Research Center

+886-2-27065528

#### CLD Center

+886-6-2536677

### Background

C-X-C motif chemokine 7 (CXCL7) also named Pro-Platelet basic protein (PPBP), which is a chemokine of the intercrine alpha family. CXCL7 is a 7.7 kDa protein containing 70 amino acid residues. CXCL7 is expressed by the platelets, which are activated. During vascular injury, CXCL7 controls the glucose metabolism, mitogenesis and neutrophil recruitment by the interaction with CXCR2.

### Uniprot ID

# P02775 3

### Synonyms

C-X-C motif chemokine 7, Leukocyte-derived Growth Factors, LDGF, Macrophage-derived Growth Factors, MDGF, Small-inducible cytokine B7, Platelet basic protein

### Sequence Note

Ala59-Asp128

## Instruction

### Reconstitution

It is recommended to reconstitute the lyophilized protein in sterile H<sub>2</sub>O to a concentration not less than 200 µg/mL and incubate the stock solution for at least 20 min to ensure sufficient re-dissolved.

### Stability & Storage

This product is stable after storage at:

- -20°C for 12 months in lyophilized state from date of receipt.
- -20°C or -80°C for 1 month under sterile conditions after reconstitution.

Avoid repeated freeze/thaw cycles.

### Shipping

The product is shipped with polar packs. Upon receipt, store it immediately at -20°C or lower for long term storage.

## Image

### Tainan Headquarter

+886-6-2536677

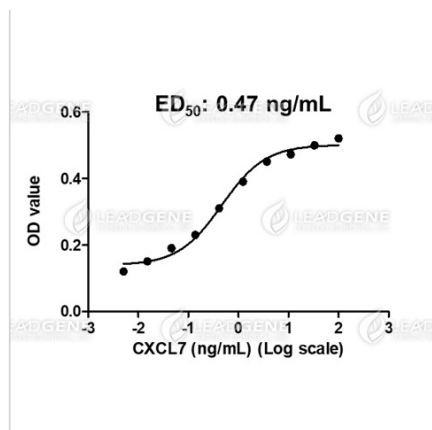
bd@leadgene.com.tw

### Innovation & Research Center

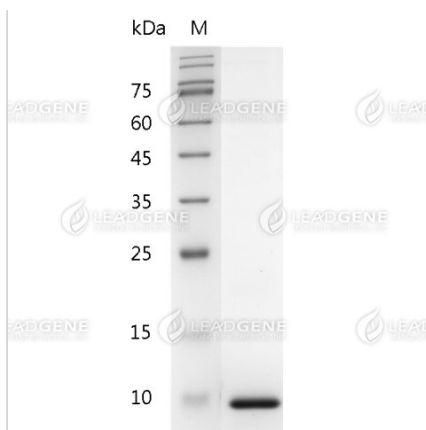
+886-2-27065528

### CLD Center

+886-6-2536677



Human CXCL7, His Tag, E. coli (LDG159PHE) chemoattracted BaF3 cells transfected with human CXCR2, with the ED<sub>50</sub> at 0.47 ng/mL.



SDS-PAGE analysis of recombinant human CXCL7.

**Disclaimer** : For Research Use or Further Manufacturing Only.