

## Human CXCL6, His Tag, E. coli

Catalog Number	LDG158PHE
Package	5 µg / 20 µg / 100 µg / Customized package

For full product information, images and publications, please visit [our website](#).



### Specifications

#### Species of Origin

Human

#### Affinity Tag

His Tag (N-term)

#### Purity

>98% as determined by SDS-PAGE analysis.

#### Activity

Measure by its ability to chemoattract human THP1 cells using a concentration range of 50-100 ng/mL.

#### Form

Lyophilized

#### Expression system

Escherichia coli

#### Buffer

Lyophilized from a 0.2 µm filtered solution of PBS, pH 7.4.

#### Molecular weight

The protein has a calculated MW of 8.97 kDa. The protein migrates as 11 kDa under reducing condition (SDS-PAGE analysis).

#### Endotoxin level

<0.1 EU per 1 µg of the protein by the LAL method.

### Background

### Background

C-X-C motif chemokine 6 (CXCL6) also named granulocyte chemotactic protein 2 (GCP-2), which is a chemokine of the intercrine alpha family. CXCL6 is a 8.3kDa protein containing 75 amino acid residues. CXCL6 has a significant role in resistance of gram-positive and gram-negative bacteria which is a chemotaxis for neutrophil granulocytes. CXCL6 has a role in the process of carcinogenesis which affects proliferation and metastasis of OS cells by the interaction with CXCR1 /CXCR2.

### Uniprot ID

# P80162 4

### Synonyms

Chemokine alpha 3, CKA-3, Granulocyte chemotactic protein 2, GCP-2, Small-inducible cytokine B6, C-X-C motif chemokine 6

### Sequence Note

Val40-Asn114

## Instruction

### Reconstitution

It is recommended to reconstitute the lyophilized protein in sterile H<sub>2</sub>O to a concentration not less than 200 µg/mL and incubate the stock solution for at least 20 min to ensure sufficient re-dissolved.

### Stability & Storage

This product is stable after storage at:

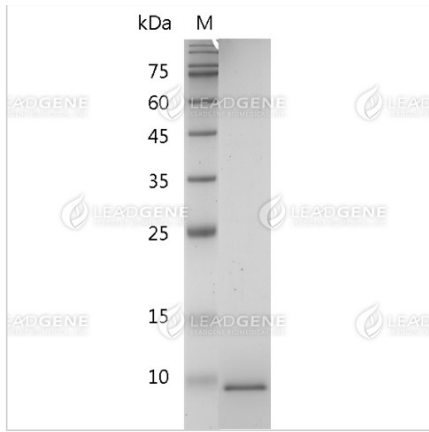
- -20°C for 12 months in lyophilized state from date of receipt.
- -20°C or -80°C for 1 month under sterile conditions after reconstitution.

Avoid repeated freeze/thaw cycles.

### Shipping

The product is shipped with polar packs. Upon receipt, store it immediately at -20°C or lower for long term storage.

## Image



SDS-PAGE analysis of recombinant human CXCL6.

**Disclaimer :** For Research Use or Further Manufacturing Only.