

## Human CXCL5, His Tag, E. coli

<b>Catalog Number</b>	LDG157PHE
<b>Package</b>	5 µg / 20 µg / 100 µg / Customized package

For full product information, images and publications, please visit [our website](#).



### Specifications

#### Species of Origin

Human

#### Affinity Tag

His Tag (N-term)

#### Purity

>98% as determined by SDS-PAGE analysis.

#### Activity

Measure by its ability to chemoattract human THP1 cells using a concentration range of 10-100 ng/mL. Activity analysis of recombinant Human CXCL5, His Tag, E. coli.

#### Form

Lyophilized

#### Expression system

Escherichia coli

#### Buffer

Lyophilized from a 0.2 µm filtered solution of PBS, pH 7.4.

#### Molecular weight

The protein has a calculated MW of 8.51 kDa. The protein migrates as 12 kDa under reducing condition (SDS-PAGE analysis).

#### Endotoxin level

<0.1 EU per 1 µg of the protein by the LAL method.

### Background

#### Tainan Headquarter

+886-6-2536677

bd@leadgene.com.tw

#### Innovation & Research Center

+886-2-27065528

#### CLD Center

+886-6-2536677

### Background

C-X-C motif chemokine 5 (CXCL5) also named epithelial-derived neutrophil-activating peptide 78 (ENA-78), which is a chemokine of the intercrine alpha family. CXCL5 is a 8kDa protein containing 70 amino acid residues. CXCL5 is stimulated by the IL-1 or TNF $\alpha$  during inflammation which produced by the eosinophils and CXCL5 is inhibited by the IFN $\gamma$ . CXCL5 promotes the formation of blood vessels and angiogenesis by binding the cell receptor CXCR2.

### Uniprot ID

# P42830 1

### Synonyms

C-X-C motif chemokine 5, Epithelial-derived neutrophil-activating protein 78, Neutrophil-activating peptide ENA-78, Small-inducible cytokine B5

### Sequence Note

Arg45-Asn114

## Instruction

### Reconstitution

It is recommended to reconstitute the lyophilized protein in sterile H<sub>2</sub>O to a concentration of 200  $\mu$ g/mL and incubate the stock solution for at least 20 min to ensure sufficient re-dissolved.

### Stability & Storage

This product is stable after storage at:

- -20°C for 12 months in lyophilized state from date of receipt.
- -20°C or -80°C for 1 month under sterile conditions after reconstitution.

Avoid repeated freeze/thaw cycles.

### Shipping

The product is shipped with polar packs. Upon receipt, store it immediately at -20°C or lower for long term storage.

## Image

### Tainan Headquarter

+886-6-2536677

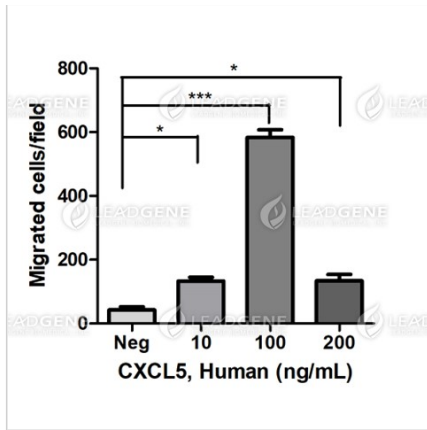
✉ [bd@leadgene.com.tw](mailto:bd@leadgene.com.tw)

### Innovation & Research Center

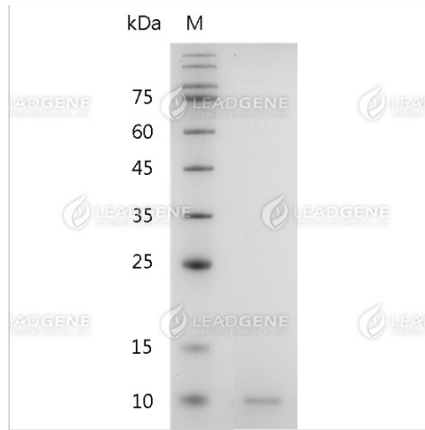
+886-2-27065528

### CLD Center

+886-6-2536677



Measure by its ability to chemoattract human THP1 cells using a concentration range of 10-100 ng/mL. Activity analysis of recombinant Human CXCL5, His Tag, E. coli.



SDS-PAGE analysis of recombinant human CXCL5.

**Disclaimer :** For Research Use or Further Manufacturing Only.