

## Human CXCL2, His Tag, E. coli

**Catalog Number** LDG154PHE

**Package** 5 µg / 20 µg / 100 µg / Customized package

For full product information, images and publications, please visit [our website](#).



### Specifications

#### Species of Origin

Human

#### Affinity Tag

His Tag (N-term)

#### Purity

>98% as determined by SDS-PAGE analysis.

#### Activity

Measure by its ability to chemoattract human PBMCs using a concentration range of 10.0 - 100.0 ng/mL. Note: Results may vary from different PBMC donors.

#### Form

Lyophilized

#### Expression system

Escherichia coli

#### Buffer

Lyophilized from a 0.2 µm filtered solution of PBS, pH 7.4.

#### Molecular weight

The protein has a calculated MW of 8.70 kDa. The protein migrates as 12 kDa under reducing condition (SDS-PAGE analysis).

#### Endotoxin level

<0.1 EU per 1 µg of the protein by the LAL method.

### Background

#### Tainan Headquarter

+886-6-2536677 +886-6-2531536

info@leadgene.com.tw

#### Taipei Office

+886-2-27065528

### Background

C-X-C motif chemokine 2 (CXCL2) also named Growth-regulated oncogene beta (GRO $\beta$ ), which is a chemokine of the intercrine alpha family. CXCL2 is a 8 kDa protein containing 73 amino acid residues. CXCL2 is expressed in immune cells such as macrophages and monocytes. CXCL2 plays an important role with immune responses and cancer progression. CXCL2 activates the cell signal transduction with caspas1 that affect the cell proliferation, differentiation and migration.

### Uniprot ID

# P19875 1

### Synonyms

C-X-C motif chemokine 2, Growth-regulated protein beta, GRO-beta, Macrophage inflammatory protein 2-alpha, MIP2-alpha, 5-73  
Alternative names: GRO-beta-THematopoietic synergistic factor, HSF SB-251353

### Sequence Note

Ala35-Asn107

## Instruction

### Reconstitution

It is recommended to reconstitute the lyophilized protein in sterile H<sub>2</sub>O to a concentration not less than 200  $\mu$ g/mL and incubate the stock solution for at least 20 min to ensure sufficient re-dissolved.

### Stability & Storage

This product is stable after storage at:

- -20°C for 12 months in lyophilized state from date of receipt.
- -20°C or -80°C for 1 month under sterile conditions after reconstitution.

Avoid repeated freeze/thaw cycles.

### Shipping

The product is shipped with polar packs. Upon receipt, store it immediately at -20°C or lower for long term storage.

## Image

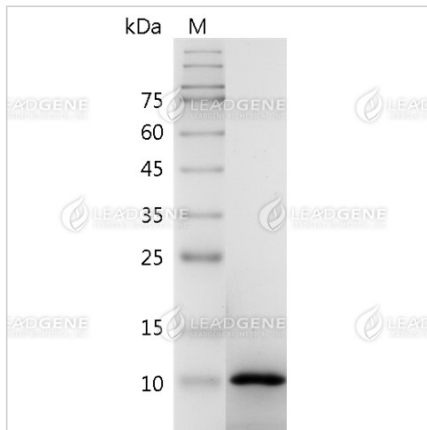
### Tainan Headquarter

+886-6-2536677 +886-6-2531536

info@leadgene.com.tw

### Taipei Office

+886-2-27065528



SDS-PAGE analysis of  
recombinant human CXCL2.

**Disclaimer :** For Research Use or Further Manufacturing Only.

**Tainan Headquarter**

+886-6-2536677 +886-6-2531536

info@leadgene.com.tw

**Taipei Office**

+886-2-27065528