

Human CXCL1, His Tag, E. coli

Catalog Number	LDG153PHE
Package	5 µg / 20 µg / 100 µg / Customized package

For full product information, images and publications, please visit [our website](#).



Specifications

Species of Origin

Human

Affinity Tag

His Tag (N-term)

Purity

>98% as determined by SDS-PAGE analysis.

Activity

Measure by its ability to chemoattract human THP1 cells using a concentration range of 10-100 ng/mL.

Form

Lyophilized

Expression system

Escherichia coli

Buffer

Lyophilized from a 0.2 µm filtered solution of PBS, pH 7.4.

Molecular weight

The protein has a calculated MW of 8.67 kDa. The protein migrates as 10 kDa under reducing condition (SDS-PAGE analysis).

Endotoxin level

<0.1 EU per 1 µg of the protein by the LAL method.

Background

Tainan Headquarter

+886-6-2536677

bd@leadgene.com.tw

Innovation & Research Center

+886-2-27065528

CLD Center

+886-6-2536677

Background

C-X-C motif chemokine 1 (CXCL1) also named Growth-regulated oncogene alpha (GRO α), which is a chemokine of the intercrine alpha family. CXCL1 is a 7.9 kDa protein containing 73 amino acid residues. CXCL1 is expressed in immune cells such as macrophage and neutrophils. CXCL1 plays an important role with immune responses and cancer progression. CXCL1 activates the cell signal transduction with caspas1 that affect the cell proliferation, differentiation and migration.

Uniprot ID

P09341

Synonyms

Growth-regulated alpha protein, C-X-C motif chemokine 1, GRO-alpha, 1-73, Melanoma growth stimulatory activity, MGSA, Neutrophil-activating protein 3, NAP-3, 4-73, 5-73, 6-73

Sequence Note

Ala35-Asn107

Instruction

Reconstitution

It is recommended to reconstitute the lyophilized protein in sterile H₂O to a concentration of 200 μ g/mL and incubate the stock solution for at least 20 min to ensure sufficient re-dissolved.

Stability & Storage

This product is stable after storage at:

- -20°C for 12 months in lyophilized state from date of receipt.
- -20°C or -80°C for 1 month under sterile conditions after reconstitution.

Avoid repeated freeze/thaw cycles.

Shipping

The product is shipped with polar packs. Upon receipt, store it immediately at -20°C or lower for long term storage.

Image

Tainan Headquarter

+886-6-2536677

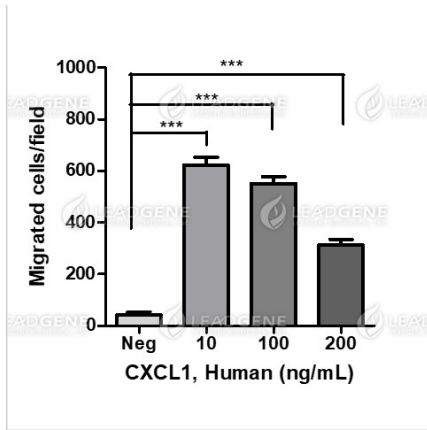
bd@leadgene.com.tw

Innovation & Research Center

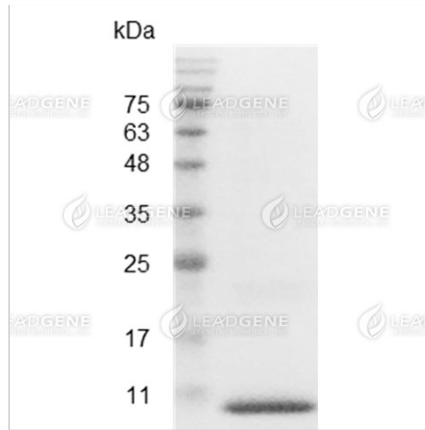
+886-2-27065528

CLD Center

+886-6-2536677



Activity analysis of recombinant Human CXCL1, His Tag, E. coli. Measure by its ability to chemoattract human THP1 cells using a concentration range of 10-100 ng/mL.



SDS-PAGE analysis of recombinant human CXCL1.

Disclaimer : For Research Use or Further Manufacturing Only.