

## Human Galectin-14, His Tag, E. coli

<b>Catalog Number</b>	LDG150PHE
<b>Package</b>	5 µg / 20 µg / 100 µg / Customized package

For full product information, images and publications, please visit [our website](#).



### Specifications

#### Species of Origin

Human

#### Affinity Tag

His Tag (N-term)

#### Purity

>98% as determined by SDS-PAGE analysis.

#### Activity

Measure by its ability to chemoattract human THP1 cells using a concentration range of 0.5-2.5 µg/mL.

#### Form

Lyophilized

#### Expression system

Escherichia coli

#### Buffer

Lyophilized from a 0.2 µm filtered solution of PBS, pH 7.4.

#### Molecular weight

The protein has a calculated MW of 16.9 kDa. The protein migrates as 17 kDa under reducing condition (SDS-PAGE analysis).

#### Endotoxin level

<0.1 EU per 1 µg of the protein by the LAL method.

### Background

#### Tainan Headquarter

+886-6-2536677

bd@leadgene.com.tw

#### Innovation & Research Center

+886-2-27065528

#### CLD Center

+886-6-2536677

### Background

Galectin-14 (Gal-14) is a lectin family member and is one of the prototype galectins. It contains one carbohydrate recognition domain (CRD), responsible for  $\beta$ -galactoside binding, and is biologically active as homodimers. Galectin-14 is like Galectin-13, which is expressed in the placenta, contributing to T cell apoptosis, immune regulation, and immune tolerance, which is indispensable for fetal development. The galectin-14 enhances trophoblast migration and invasion via promoting the expression of MMP-9 and N-cadherin in the Akt pathway. Furthermore, galectin-14 stimulates the production of IL-8 in non-activated T cells, which associate with angiogenesis at the maternal-fetal interface.

### Uniprot ID

#Q8TCE9

### Synonyms

Gal-14, Placental protein 13-like, Charcot-Leyden crystal protein 2, CLC2

### Sequence Note

Ser2-Asp139

## Instruction

### Reconstitution

It is recommended to reconstitute the lyophilized protein in sterile H<sub>2</sub>O to a concentration of 200  $\mu$ g/mL and incubate the stock solution for at least 20 min to ensure sufficient re-dissolved.

### Stability & Storage

This product is stable after storage at:

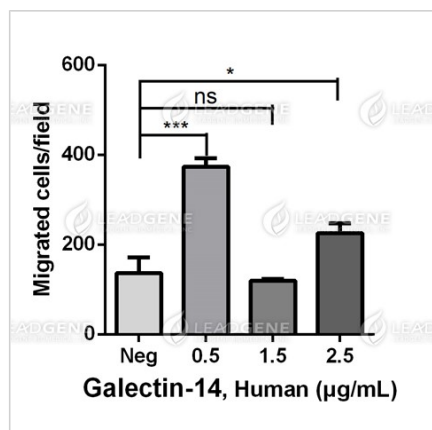
- -20°C for 12 months in lyophilized state from date of receipt.
- -20°C or -80°C for 1 month under sterile conditions after reconstitution.

Avoid repeated freeze/thaw cycles.

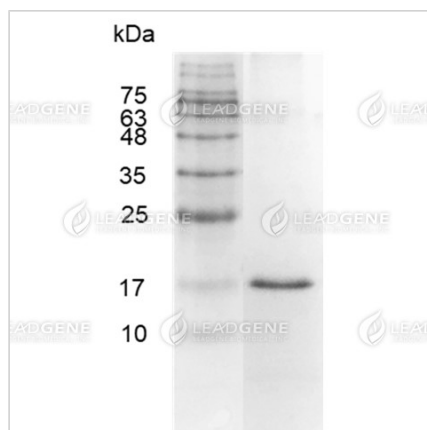
### Shipping

The product is shipped with polar packs. Upon receipt, store it immediately at -20°C or lower for long term storage.

## Image



Measure by its ability to chemoattract human THP1 cells using a concentration range of 0.5-2.5 µg/mL. Activity analysis of recombinant Human Galectin-14, His Tag, E. coli.



SDS-PAGE analysis of recombinant human Galectin-14.

**Disclaimer :** For Research Use or Further Manufacturing Only.