

## Human Galectin-9, His Tag, E. coli

**Catalog Number** LDG146PHE

**Package** 5 µg / 20 µg / 100 µg / Customized package

For full product information, images and publications, please visit [our website](#).



### Specifications

#### Species of Origin

Human

#### Affinity Tag

His Tag (N-term)

#### Purity

>98% as determined by SDS-PAGE analysis.

#### Activity

Measured by its ability of the immobilized protein to support the adhesion of Jurkat cells. The ED<sub>50</sub> for this effect is <3 µg/mL.

#### Form

Lyophilized

#### Expression system

Escherichia coli

#### Buffer

Lyophilized from a 0.2 µm filtered solution of PBS, pH 7.4.

#### Molecular weight

The protein has a calculated MW of 36.7 kDa. The protein migrates as 37 kDa under reducing condition (SDS-PAGE analysis).

#### Endotoxin level

<0.1 EU per 1 µg of the protein by the LAL method.

### Background

#### Tainan Headquarter

+886-6-2536677 +886-6-2531536

info@leadgene.com.tw

#### Taipei Office

+886-2-27065528

### Background

Galectin-9 (Gal-9) is a lectin family member and is one of the tandem repeat-type galectins containing two carbohydrate recognition domains (CRD) connected by a linker region in a single peptide chain. The CRD is responsible for  $\beta$ -galactoside binding, and several binding partners for galectin-9 have been identified, including CD44, FGL, Gcgr, GLUT- 2, IgE, IgM, PDI, and Tim-3. Galectin-9 is constitutively presented in the small intestine, liver, uterine epithelial cells, skin epidermis, and esophageal epithelium. Galectin-9 contributing to cell growth, differentiation, adhesion, communication, and death. Accumulated evidence indicates that Gal-9 blockade promotes T cell immunity against tumors, suggesting that galectin-9 is a promising target for immunotherapy.

### Uniprot ID

#O00182

### Synonyms

Gal-9, Ecalectin, Tumor antigen HOM-HD-21

### Sequence Note

Ala2-Thr355

## Instruction

### Reconstitution

It is recommended to reconstitute the lyophilized protein in sterile H<sub>2</sub>O to a concentration not less than 200  $\mu$ g/mL and incubate the stock solution for at least 20 min to ensure sufficient re-dissolved.

### Shipping

The product is shipped with polar packs. Upon receipt, store it immediately at -20°C or lower for long term storage.

### Tainan Headquarter

+886-6-2536677 +886-6-2531536

info@leadgene.com.tw

### Taipei Office

+886-2-27065528

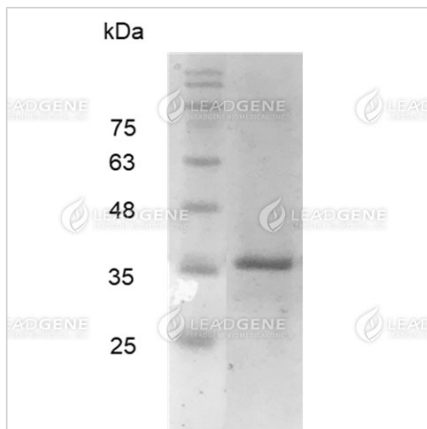
### Stability & Storage

This product is stable after storage at:

- -20°C for 12 months in lyophilized state from date of receipt.
- -20°C or -80°C for 1 month under sterile conditions after reconstitution.

Avoid repeated freeze/thaw cycles.

### Image



SDS-PAGE analysis of  
recombinant human Galectin-9.

**Disclaimer :** For Research Use or Further Manufacturing Only.

#### Tainan Headquarter

+886-6-2536677 +886-6-2531536

info@leadgene.com.tw

#### Taipei Office

+886-2-27065528