

Human Galectin-7, His Tag, E. coli

Catalog Number LDG144PHE

Package 5 µg / 20 µg / 100 µg / Customized package

For full product information, images and publications, please visit [our website](#).



Specifications

Species of Origin

Human

Affinity Tag

His Tag (N-term)

Purity

>98% as determined by SDS-PAGE analysis.

Activity

Measured by its ability to agglutinate human red blood cells. The ED₅₀ for this effect is <2 µg/mL

Form

Lyophilized

Expression system

Escherichia coli

Buffer

Lyophilized from a 0.2 µm filtered solution of PBS, pH 7.4.

Molecular weight

The protein has a calculated MW of 15.9 kDa. The protein migrates as 18 kDa under reducing condition (SDS-PAGE analysis).

Endotoxin level

<0.1 EU per 1 µg of the protein by the LAL method.

Background

Tainan Headquarter

+886-6-2536677 +886-6-2531536

info@leadgene.com.tw

Taipei Office

+886-2-27065528

Background

Galectin-7 (Gal-7) is a lectin family member and is one of the prototype galectins. It contains one carbohydrate recognition domain (CRD), responsible for β -galactoside binding, and is biologically active as homodimers. Galectin-7 is constitutively presented in the gastrointestinal tract, stratified epithelia, skin, and fetal heart. It has been reported that galectin-7 serves as an effector in triggering apoptosis following activation of the p53 pathway. Furthermore, it serves important functions in numerous biological activities including cell adhesion, migration, proliferation, and differentiation.

Uniprot ID

#P47929

Synonyms

Gal-7, HKL-14, PI7, p53-induced gene 1 protein

Sequence Note

Ser2-Phe136

Instruction

Reconstitution

It is recommended to reconstitute the lyophilized protein in sterile H₂O to a concentration not less than 200 μ g/mL and incubate the stock solution for at least 20 min to ensure sufficient re-dissolved.

Stability & Storage

This product is stable after storage at:

- -20°C for 12 months in lyophilized state from date of receipt.
- -20°C or -80°C for 1 month under sterile conditions after reconstitution.

Avoid repeated freeze/thaw cycles.

Shipping

The product is shipped with polar packs. Upon receipt, store it immediately at -20°C or lower for long term storage.

Tainan Headquarter

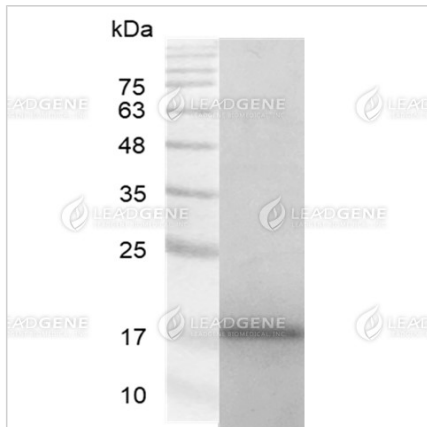
+886-6-2536677 +886-6-2531536

info@leadgene.com.tw

Taipei Office

+886-2-27065528

Image



SDS-PAGE analysis of
recombinant human Galectin-7.

Disclaimer : For Research Use or Further Manufacturing Only.

Tainan Headquarter

+886-6-2536677 +886-6-2531536

info@leadgene.com.tw

Taipei Office

+886-2-27065528