

## Human Galectin-2, His Tag, E. coli

**Catalog Number** LDG141PHE

**Package** 5 µg / 20 µg / 100 µg / Customized package

For full product information, images and publications, please visit [our website](#).



### Specifications

#### Species of Origin

Human

#### Affinity Tag

His Tag (N-term)

#### Purity

>98% as determined by SDS-PAGE analysis.

#### Activity

Measured by its ability to agglutinate human red blood cells. The ED<sub>50</sub> for this effect is <20 µg/mL.

#### Form

Lyophilized

#### Expression system

Escherichia coli

#### Buffer

Lyophilized from a 0.2 µm filtered solution of PBS, pH 7.4.

#### Molecular weight

The protein has a calculated MW of 15.5 kDa. The protein migrates as 15 kDa under reducing condition (SDS-PAGE analysis).

#### Endotoxin level

<0.1 EU per 1 µg of the protein by the LAL method.

### Background

#### Tainan Headquarter

+886-6-2536677 +886-6-2531536

info@leadgene.com.tw

#### Taipei Office

+886-2-27065528

### Background

Galectin-2 (Gal-2) is a lectin family member and structurally closely related to galectin-1. It contains one carbohydrate recognition domain (CRD), responsible for  $\beta$ -galactoside binding, and is biologically active as homodimers. Galectin-2 serves as a proapoptotic effector for activated T cells through caspase-3 signaling. Moreover, galectin-2 has emerged as a crucial factor in driving the macrophage to CD40-positive M1 polarization, leading to arteriogenesis attenuation and collateral arteries remodeling.

### Uniprot ID

#P05162

### Synonyms

Gal-2, Beta-galactoside-binding lectin L-14-II, HL14, Lactose-binding lectin 2, S-Lac lectin 2

### Sequence Note

Thr2-Glu132

## Instruction

### Reconstitution

It is recommended to reconstitute the lyophilized protein in sterile H<sub>2</sub>O to a concentration not less than 200  $\mu$ g/mL and incubate the stock solution for at least 20 min to ensure sufficient re-dissolved.

### Stability & Storage

This product is stable after storage at:

- -20°C for 12 months in lyophilized state from date of receipt.
- -20°C or -80°C for 1 month under sterile conditions after reconstitution.

Avoid repeated freeze/thaw cycles.

### Shipping

The product is shipped with polar packs. Upon receipt, store it immediately at -20°C or lower for long term storage.

## Image

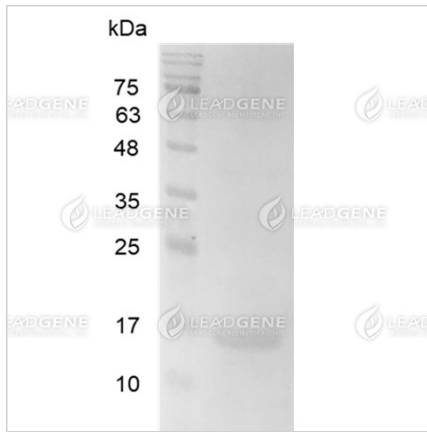
### Tainan Headquarter

+886-6-2536677 +886-6-2531536

info@leadgene.com.tw

### Taipei Office

+886-2-27065528



SDS-PAGE analysis of  
recombinant human Galectin-2.

**Disclaimer :** For Research Use or Further Manufacturing Only.