

## Human CDNF, His Tag, E. coli

<b>Catalog Number</b>	LDG133PHE
<b>Package</b>	5 µg / 20 µg / 100 µg / Customized package

For full product information, images and publications, please visit [our website](#).



### Specifications

#### Species of Origin

Human

#### Affinity Tag

His Tag (C-term)

#### Purity

>98% as determined by SDS-PAGE analysis.

#### Endotoxin level

<0.1 EU per 1 µg of the protein by the LAL method.

#### Expression system

Escherichia coli

#### Buffer

Lyophilized from a 0.2 µm filtered solution of PBS, pH 8.0.

#### Molecular weight

The protein has a calculated MW of 19.26 kDa.  
The protein migrates as 18 kDa under reducing condition (SDS-PAGE analysis).

#### Form

Lyophilized

### Background

#### Tainan Headquarter

+886-6-2536677

bd@leadgene.com.tw

#### Innovation & Research Center

+886-2-27065528

#### CLD Center

+886-6-2536677

### Background

Cerebral dopamine neurotrophic factor (CDNF) also known as ARMETL1, which is a member of ARMET family. CDNF is a 20.9 kDa neurotrophic factor containing 187 residues that widely expressed in various tissues, including embryonic and postnatal brain. Besides, CDNF shows the ability to protect the degeneration of dopaminergic neurons in Parkinson's disease, induced by 6-hydroxydopamine (6-OHDA). Moreover, as a neurotrophic factor, CDNF also can repair the dopaminergic function of dopaminergic neurons.

### Uniprot ID

#Q49AH0

### Synonyms

Cerebral dopamine neurotrophic factor, CDNF, ARMET-like protein 1

### Sequence Note

Gln27-Leu187

## Instruction

### Reconstitution

It is recommended to reconstitute the lyophilized protein in sterile H<sub>2</sub>O to a concentration of 200 µg/mL and incubate the stock solution for at least 20 min to ensure sufficient re-dissolved.

### Stability & Storage

This product is stable after storage at:

- -20°C for 12 months in lyophilized state from date of receipt.
- -20°C or -80°C for 1 month under sterile conditions after reconstitution.

Avoid repeated freeze/thaw cycles.

### Shipping

The product is shipped with polar packs. Upon receipt, store it immediately at -20°C or lower for long term storage.

## Image

### Tainan Headquarter

+886-6-2536677

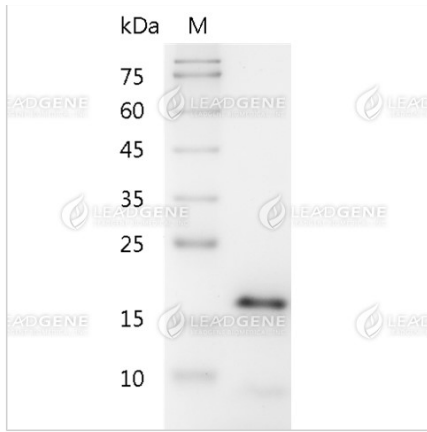
bd@leadgene.com.tw

### Innovation & Research Center

+886-2-27065528

### CLD Center

+886-6-2536677



SDS-PAGE analysis of recombinant human CDNF.

**Disclaimer :** For Research Use or Further Manufacturing Only.