

Human BDNF, His Tag, E. coli

Catalog Number LDG130PHE

Package 5 µg / 20 µg / 100 µg / Customized package

For full product information, images and publications, please visit [our website](#).



Specifications

Species of Origin

Human

Affinity Tag

His Tag (C-term)

Purity

>98% as determined by SDS-PAGE analysis.

Activity

Measure by its ability to induce proliferation in BaF3 cells transfected with TrkB. The ED₅₀ for this effect is <2 ng/mL.

Form

Lyophilized

Expression system

Escherichia coli

Buffer

Lyophilized from a 0.2 µm filtered solution containing 20 mM sodium citrate and 0.2 M NaCl, pH 3.5.

Molecular weight

The protein has a calculated MW of 14.45 kDa. The protein migrates as 14 kDa under reducing condition (SDS-PAGE analysis).

Endotoxin level

<0.1 EU per 1 µg of the protein by the LAL method.

Background

Tainan Headquarter

+886-6-2536677 +886-6-2531536

info@leadgene.com.tw

Taipei Office

+886-2-27065528

Background

Brain-derived neurotrophic factor (BDNF) is a member of neurotrophin family that not only primarily expressed in hippocampus, amygdala, cerebral cortex, hypothalamus and cerebellum but also has been detected in blood platelets and in circulating plasma. BDNF is a 27.8 kDa protein containing 247 residues, which plays a critical role in regulating synaptic transmission and plasticity in various region of the CNS. Additionally, BDNF can acts as a modulator in the long-term potentiation of memory-related modifications in hippocampal synaptic transmission.

Uniprot ID

#P23560

Synonyms

Brain-derived neurotrophic factor, BDNF, Abrineurin

Sequence Note

His132-Arg250

Instruction

Reconstitution

It is recommended to reconstitute the lyophilized protein in sterile H₂O to a concentration not less than 200 µg/mL and incubate the stock solution for at least 20 min to ensure sufficient re-dissolved.

Stability & Storage

This product is stable after storage at:

- -20°C for 12 months in lyophilized state from date of receipt.
- -20°C or -80°C for 1 month under sterile conditions after reconstitution.

Avoid repeated freeze/thaw cycles.

Shipping

The product is shipped with polar packs. Upon receipt, store it immediately at -20°C or lower for long term storage.

Tainan Headquarter

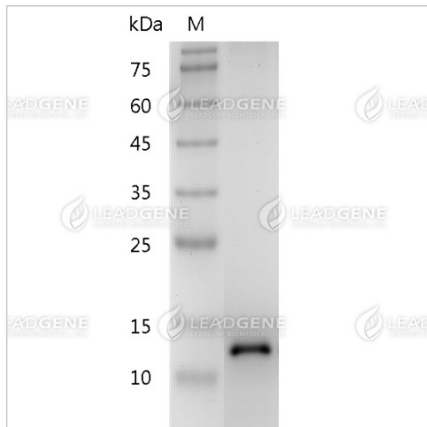
+886-6-2536677 +886-6-2531536

info@leadgene.com.tw

Taipei Office

+886-2-27065528

Image



SDS-PAGE analysis of
recombinant human BDNF.

Disclaimer : For Research Use or Further Manufacturing Only.

Tainan Headquarter

+886-6-2536677 +886-6-2531536

info@leadgene.com.tw

Taipei Office

+886-2-27065528