

Human Beta-NGF, His Tag, E. coli

Catalog Number	LDG129PHE
Package	5 µg / 20 µg / 100 µg / Customized package

For full product information, images and publications, please visit [our website](#).



Specifications

Species of Origin

Human

Affinity Tag

His Tag (C-term)

Purity

>98% as determined by SDS-PAGE analysis.

Activity

Measure by its ability to induce TF-1 cells proliferation. The ED₅₀ for this effect is <0.7 ng/mL. The specific activity of recombinant human beta-NGF is > 1 x 10⁶ IU/mg.

Form

Lyophilized

Expression system

Escherichia coli

Buffer

Lyophilized from a 0.2 µm filtered solution containing 20 mM sodium citrate and 0.2 M NaCl, pH 4.5.

Molecular weight

The protein has a calculated MW of 14.43 kDa. The protein migrates as 11 kDa under reducing condition (SDS-PAGE analysis).

Endotoxin level

<0.1 EU per 1 µg of the protein by the LAL method.

Background

Tainan Headquarter

+886-6-2536677

bd@leadgene.com.tw

Innovation & Research Center

+886-2-27065528

CLD Center

+886-6-2536677

Background

Nerve Growth Factors (NGF) is critical for the development and maintenance of the sympathetic and sensory neuron systems. NGF has been demonstrated as a complex that consists of three polypeptides named α , β and γ subunits. Among them, β subunit, which known as beta-NGF is a 26.9 kDa protein containing 241 residues that involve in neuronal survival and differentiation. Besides, beta-NGF also acts as a ligand to TRKA receptor, which indispensable for the differentiation and development of pain and temperature sensing neurons.

Uniprot ID

#P01138

Synonyms

Nerve Growth Factors-Beta, Beta-NGF

Sequence Note

Ser122-Ala241

Instruction

Reconstitution

It is recommended to reconstitute the lyophilized protein in sterile H₂O to a concentration of 200 μ g/mL and incubate the stock solution for at least 20 min to ensure sufficient re-dissolved.

Stability & Storage

This product is stable after storage at:

- -20°C for 12 months in lyophilized state from date of receipt.
- -20°C or -80°C for 1 month under sterile conditions after reconstitution.

Avoid repeated freeze/thaw cycles.

Shipping

The product is shipped with polar packs. Upon receipt, store it immediately at -20°C or lower for long term storage.

Image

Tainan Headquarter

+886-6-2536677

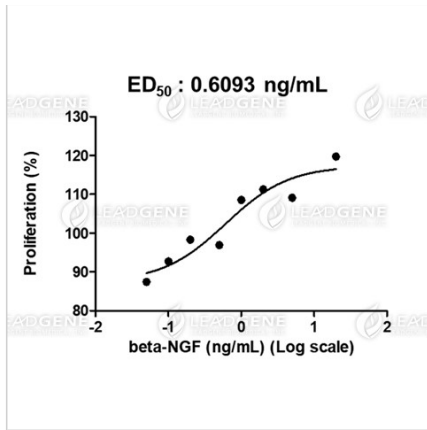
✉ bd@leadgene.com.tw

Innovation & Research Center

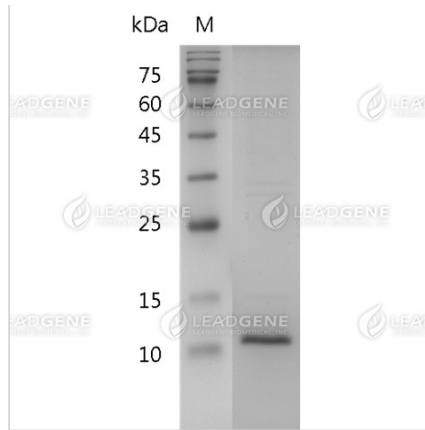
+886-2-27065528

CLD Center

+886-6-2536677



Human Beta-NGF, His Tag, E. coli (LDG129PHE) induced TF-1 cell proliferation, with the ED50 at 0.6093 ng/mL.



SDS-PAGE analysis of recombinant human beta-NGF.

Disclaimer : For Research Use or Further Manufacturing Only.