

Human LIGHT, His Tag, E. coli

Catalog Number	LDG125PHE
Package	5 µg / 20 µg / 100 µg / Customized package

For full product information, images and publications, please visit [our website](#).



Specifications

Species of Origin

Human

Affinity Tag

His Tag (C-term)

Purity

>98% as determined by SDS-PAGE analysis.

Activity

Measure by its ability to induce cytotoxicity in HT-29 cells in the presence of IFN-gamma. The ED₅₀ for this effect is < 10 ng/mL.

Form

Lyophilized

Expression system

Escherichia coli

Buffer

Lyophilized from a 0.2 µm filtered solution of PBS, pH 8.0.

Molecular weight

The protein has a calculated MW of 20.30 kDa. The protein migrates as 17 kDa under reducing condition (SDS-PAGE analysis).

Endotoxin level

<0.1 EU per 1 µg of the protein by the LAL method.

Background

Tainan Headquarter

+886-6-2536677

bd@leadgene.com.tw

Innovation & Research Center

+886-2-27065528

CLD Center

+886-6-2536677

Background

LIGHT, also known as TNFSF14 is a member of the TNF superfamily that produced by multiple immune cells such as activated T cells and immature dendritic cells (DCs). LIGHT is a 29 kDa type II transmembrane protein, which serves as a ligand for both lymphotoxin β receptor (LT β R) and TNFSF signaling receptors (TNFRSF14/HVEM). Besides, LIGHT can amplify NF- κ B signaling pathway in T cells when presenting anti-CD3 antibody treatment. Additionally, LIGHT can stimulate T cell proliferation and IFN-expression via interacting with TNFRSF13 /HVEM.

Uniprot ID

#O43557

Synonyms

LIGHT, Herpes virus entry mediator ligand, HVEM-L, CD258, Tumor necrosis factor ligand superfamily member 14

Sequence Note

Arg64-Val240

Instruction

Reconstitution

It is recommended to reconstitute the lyophilized protein in sterile H₂O to a concentration of 200 μ g/mL and incubate the stock solution for at least 20 min to ensure sufficient re-dissolved.

Stability & Storage

This product is stable after storage at:

- -20°C for 12 months in lyophilized state from date of receipt.
- -20°C or -80°C for 2 weeks under sterile conditions after reconstitution.

Avoid repeated freeze/thaw cycles.

Shipping

The product is shipped with polar packs. Upon receipt, store it immediately at -20°C or lower for long term storage.

Image

Tainan Headquarter

+886-6-2536677

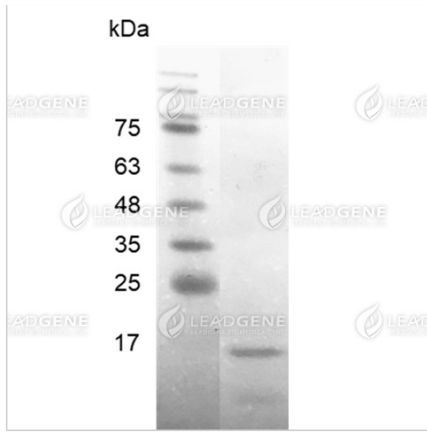
bd@leadgene.com.tw

Innovation & Research Center

+886-2-27065528

CLD Center

+886-6-2536677



SDS-PAGE analysis of recombinant human LIGHT.

Disclaimer : For Research Use or Further Manufacturing Only.