

Human 4-1BBL, His Tag, E. coli

Catalog Number	LDG120PHE
Package	5 µg / 20 µg / 100 µg / Customized package

For full product information, images and publications, please visit [our website](#).



Specifications

Species of Origin

Human

Affinity Tag

His Tag (C-term)

Purity

>95% as determined by SDS-PAGE analysis.

Activity

Measure by its ability to induce IL-8 secretion in human PBMCs. The ED₅₀ for this effect is 1-5 ng/mL.

Form

Lyophilized

Expression system

Escherichia coli

Buffer

Lyophilized from a 0.2 µm filtered solution of PBS, pH 7.4.

Molecular weight

The protein has a calculated MW of 20.4 kDa. The protein migrates as 20 kDa under reducing condition (SDS-PAGE analysis).

Endotoxin level

<0.1 EU per 1 µg of the protein by the LAL method.

Background

Tainan Headquarter

+886-6-2536677

bd@leadgene.com.tw

Innovation & Research Center

+886-2-27065528

CLD Center

+886-6-2536677

Background

4-1BB ligand (4-1BBL) is a type II transmembrane protein that is part of the tumor necrosis factor (TNF) ligand family. As an inducible co-stimulatory molecule, it presents on several antigen presenting cell (APC) types, including B cells, macrophages and DCs. The interactions between 4-1BB and 4-1BBL trigger pleiotropic effects on the immune response including antigen presenting process, proliferation of CD4 and CD8 positive T-cells, as well as cytokine secretion from T-cells through NFκB, c-Jun, and p38 downstream signal pathways activation. Therefore, 4-1BB and 4-1BBL are recently used for the immunotherapy of cancer.

Uniprot ID

#P41273

Synonyms

Tumor necrosis factor ligand superfamily member 9

Sequence Note

Arg71-Glu254

Instruction

Reconstitution

It is recommended to reconstitute the lyophilized protein in sterile H₂O to a concentration of 200 µg/mL and incubate the stock solution for at least 20 min to ensure sufficient re-dissolved.

Stability & Storage

This product is stable after storage at:

- -20°C for 12 months in lyophilized state from date of receipt.
- -20°C or -80°C for 1 month under sterile conditions after reconstitution.

Avoid repeated freeze/thaw cycles.

Shipping

The product is shipped with polar packs. Upon receipt, store it immediately at -20°C or lower for long term storage.

Image

Tainan Headquarter

+886-6-2536677

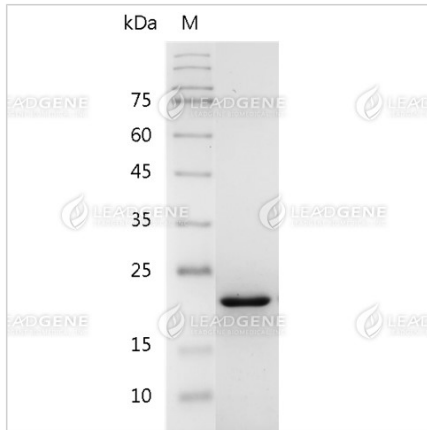
bd@leadgene.com.tw

Innovation & Research Center

+886-2-27065528

CLD Center

+886-6-2536677



SDS-PAGE analysis of recombinant human 4-1BBL.

Disclaimer : For Research Use or Further Manufacturing Only.