

Human CD30L, His Tag, E. coli

Catalog Number LDG119PHE

Package 5 µg / 20 µg / 100 µg / Customized package

For full product information, images and publications, please visit [our website](#).



Specifications

Species of Origin

Human

Affinity Tag

His Tag (C-term)

Purity

>98% as determined by SDS-PAGE analysis.

Activity

Measure by its ability to induce IL-8 secretion in human PBMCs using a concentration range of 10 - 100 ng/mL. Note: Results may vary from different PBMC donors.

Form

Lyophilized

Expression system

Escherichia coli

Buffer

Lyophilized from a 0.2 µm filtered solution of PBS, pH 7.4.

Molecular weight

The protein has a calculated MW of 20.57 kDa. The protein migrates as 18 kDa under reducing condition (SDS-PAGE analysis).

Endotoxin level

<0.1 EU per 1 µg of the protein by the LAL method.

Background

Tainan Headquarter

+886-6-2536677 +886-6-2531536

info@leadgene.com.tw

Taipei Office

+886-2-27065528

Background

Human CD30L is also named for CD153 and TNFSF8 which is one member of TNF family. Human CD30L is expressed on T cells. It binds the CD30, which is on some lymphoma cell lines. Human CD30L is a 30 kDa cytokine with 171 amino acid residues which is a transmembrane glycoprotein. Human CD30L plays an important role in the regulation of cell proliferation, activation and apoptosis. Human CD30L is a good target of cell therapy in inflammatory diseases.

Uniprot ID

#P32971

Synonyms

CD30 ligand , CD30L, Tumor necrosis factor ligand superfamily member 8

Sequence Note

Gln63-Asp234

Instruction

Reconstitution

It is recommended to reconstitute the lyophilized protein in sterile H₂O to a concentration not less than 200 µg/mL and incubate the stock solution for at least 20 min to ensure sufficient re-dissolved.

Stability & Storage

This product is stable after storage at:

- -20°C for 12 months in lyophilized state from date of receipt.
- -20°C or -80°C for 1 month under sterile conditions after reconstitution.

Avoid repeated freeze/thaw cycles.

Shipping

The product is shipped with polar packs. Upon receipt, store it immediately at -20°C or lower for long term storage.

Image

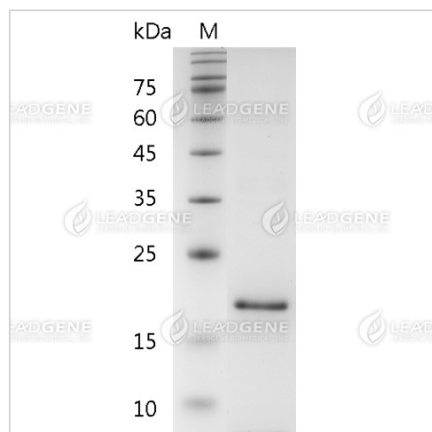
Tainan Headquarter

+886-6-2536677 +886-6-2531536

info@leadgene.com.tw

Taipei Office

+886-2-27065528



SDS-PAGE analysis of
recombinant human CD30L.

Disclaimer : For Research Use or Further Manufacturing Only.