

## Human FASL, His-SUMO Tag, E. coli

<b>Catalog Number</b>	LDG117PHE
<b>Package</b>	5 µg / 20 µg / 100 µg / Customized package

For full product information, images and publications, please visit [our website](#).



### Specifications

#### Species of Origin

Human

#### Affinity Tag

His-SUMO Tag (N-term)

#### Purity

>98% as determined by SDS-PAGE analysis.

#### Activity

Measure by its ability to induce apoptosis in Jurkat cells. The ED<sub>50</sub> for this effect is <1 ng/mL. The specific activity of recombinant human FasL is > 1 x 10<sup>6</sup> IU/mg.

#### Form

Lyophilized

#### Expression system

Escherichia coli

#### Buffer

Lyophilized from a 0.2 µm filtered solution of PBS, pH 8.0.

#### Molecular weight

The protein has a calculated MW of 29.51 kDa. The protein migrates as 30-35 kDa under reducing condition (SDS-PAGE analysis).

#### Endotoxin level

<0.1 EU per 1 µg of the protein by the LAL method.

### Background

#### Tainan Headquarter

+886-6-2536677

bd@leadgene.com.tw

#### Innovation & Research Center

+886-2-27065528

#### CLD Center

+886-6-2536677

### Background

Fas Ligand (FasL) is a 17.34 kDa tumor necrosis factor with 152 amino acid residues. FasL is expressed from lymphoid tissue and secreted to blood. Binding to its receptor, TNFRSF6/FAS, leads to induce apoptotic signal into cells. Involved in cytotoxic T-cell-mediated apoptosis, natural killer cell-mediated apoptosis and in T-cell development.

### Uniprot ID

#P48023

### Synonyms

Fas ligand, FasL, Apoptosis antigen ligand, APTL, CD95 ligand, CD95-L, CD178, Tumor necrosis factor ligand superfamily member 6

### Sequence Note

Gln130-Leu281

## Instruction

### Reconstitution

It is recommended to reconstitute the lyophilized protein in sterile H<sub>2</sub>O to a concentration of 200 µg/mL and incubate the stock solution for at least 20 min to ensure sufficient re-dissolved.

### Stability & Storage

This product is stable after storage at:

- -20°C for 12 months in lyophilized state from date of receipt.
- -20°C or -80°C for 1 month under sterile conditions after reconstitution.

Avoid repeated freeze/thaw cycles.

### Shipping

The product is shipped with polar packs. Upon receipt, store it immediately at -20°C or lower for long term storage.

## Image

### Tainan Headquarter

+886-6-2536677

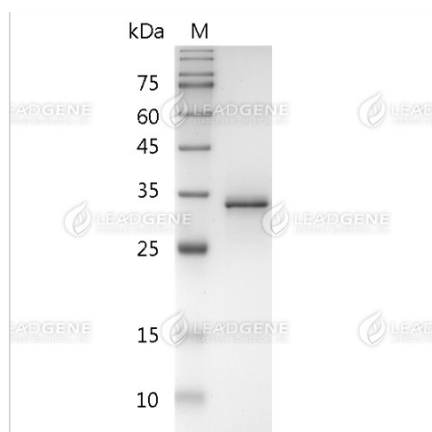
bd@leadgene.com.tw

### Innovation & Research Center

+886-2-27065528

### CLD Center

+886-6-2536677



SDS-PAGE analysis of recombinant human FASL.

**Disclaimer :** For Research Use or Further Manufacturing Only.