

## Human Trop-2, His Tag, CHO

<b>Catalog Number</b>	LDG108PHM
<b>Package</b>	5 µg / 20 µg / 100 µg / Customized package

For full product information, images and publications, please visit [our website](#).



### Specifications

#### Species of Origin

Human

#### Affinity Tag

His Tag (C-term)

#### Purity

>90% as determined by SDS-PAGE analysis.

#### Activity

Measured by the ability of the immobilized protein to support the adhesion of U937 human histiocytic lymphoma cells. The ED50 for this effect is <10 µg/mL.

#### Mycoplasma

Not detected

#### Expression system

CHO

#### Buffer

Lyophilized from a 0.2 µm filtered solution of PBS, pH 7.4.

#### Molecular weight

The protein has a calculated 28.71 MW of kDa. The protein migrates as 25-45 kDa under reducing condition (SDS-PAGE analysis).

#### Endotoxin level

<0.1 EU per 1 µg of the protein by the LAL method.

#### Form

Lyophilized

### Background

#### Tainan Headquarter

+886-6-2536677

bd@leadgene.com.tw

#### Innovation & Research Center

+886-2-27065528

#### CLD Center

+886-6-2536677

### Background

Trop-2 is a transmembrane glycoprotein overexpressed in many cancers, associated with tumor growth and metastasis. It is a target for antibody-drug conjugates in cancer therapy.

### Uniprot ID

P09758

### Synonyms

Tumor-associated calcium signal transducer 2, Cell surface glycoprotein Trop-2, Membrane component chromosome 1 surface marker 1, Pancreatic carcinoma marker protein GA733-1

### Sequence Note

His27-Thr274

## Instruction

### Reconstitution

It is recommended to reconstitute the lyophilized protein in sterile H<sub>2</sub>O to a concentration of 200 µg/mL and incubate the stock solution for at least 20 min to ensure sufficient re-dissolved.

### Stability & Storage

This product is stable after storage at:

- -20°C for 12 months in lyophilized state from date of receipt.
- -20°C or -80°C for 1 month under sterile conditions after reconstitution.

Avoid repeated freeze/thaw cycles.

### Shipping

The product is shipped with polar packs. Upon receipt, store it immediately at -20°C or lower for long term storage.

## Image

### Tainan Headquarter

+886-6-2536677

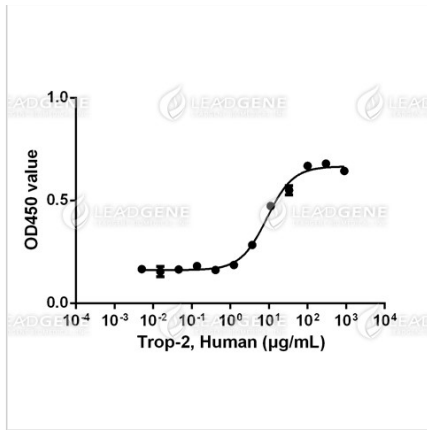
bd@leadgene.com.tw

### Innovation & Research Center

+886-2-27065528

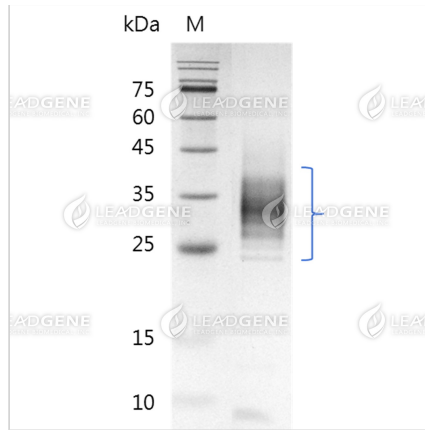
### CLD Center

+886-6-2536677



Measured by the ability of the immobilized protein to support the adhesion of U937 human histiocytic lymphoma cells. The ED50 for this effect is <10 µg/mL.

Activity analysis of recombinant Human Trop-2, His Tag, CHO.



SDS-PAGE analysis of recombinant human Trop-2.

**Disclaimer :** For Research Use or Further Manufacturing Only.