

## Human BMP-2, His Tag, E. coli

**Catalog Number** LDG099PHE

**Package** 5 µg / 20 µg / 100 µg / Customized package

For full product information, images and publications, please visit [our website](#).



### Specifications

#### Species of Origin

Human

#### Affinity Tag

His Tag (C-term)

#### Purity

>95% as determined by SDS-PAGE analysis.

#### Activity

Measure by its ability to induce alkaline phosphatase production by ATDC5 cells. The ED<sub>50</sub> for this effect is <1.0 µg/mL.

#### Form

Lyophilized

#### Expression system

Escherichia coli

#### Buffer

Lyophilized from a 0.2 µm filtered solution containing 20 mM sodium citrate and 0.2 M NaCl, pH 4.5.

#### Molecular weight

The protein has a calculated MW of 13.76 kDa. The protein migrates as 14 kDa under reducing condition (SDS-PAGE analysis).

#### Endotoxin level

<0.1 EU per 1 µg of the protein by the LAL method.

### Background

#### Tainan Headquarter

+886-6-2536677 +886-6-2531536

info@leadgene.com.tw

#### Taipei Office

+886-2-27065528

### Background

Bone Morphogenetic Protein-2 (BMP-2) is an extracellular multifunctional signaling cytokine that is also a member of the TGF- $\beta$  family. BMP-2 can bind with the TGF- $\beta$  receptor to active SMAD protein signal transduction. Moreover, it engages in the path of signals such as Wnt and Notch. BMP-2 plays an essential role in the growth of hard bones and cartilage and involved in the differentiation of osteoblasts.

### Uniprot ID

#P12643

### Synonyms

Bone morphogenetic protein 2A , BMP-2A, Bone morphogenetic protein 2

### Sequence Note

Gln283-Arg396

## Instruction

### Reconstitution

It is recommended to reconstitute the lyophilized protein in 4 mM HCl to a concentration not less than 200  $\mu$ g/mL and incubate the stock solution for at least 20 min to ensure sufficient re-dissolved.

### Stability & Storage

This product is stable after storage at:

- -20°C for 12 months in lyophilized state from date of receipt.
- -20°C or -80°C for 1 month under sterile conditions after reconstitution.

Avoid repeated freeze/thaw cycles.

### Shipping

The product is shipped with polar packs. Upon receipt, store it immediately at -20°C or lower for long term storage.

## Image

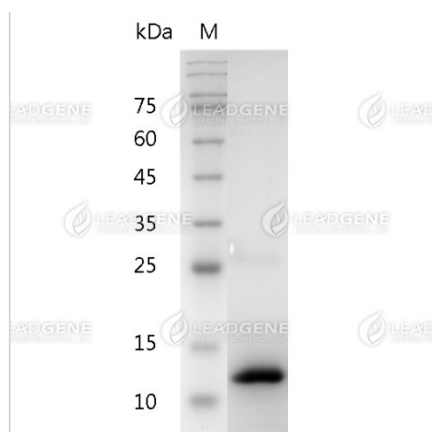
### Tainan Headquarter

+886-6-2536677 +886-6-2531536

info@leadgene.com.tw

### Taipei Office

+886-2-27065528



SDS-PAGE analysis of  
recombinant human BMP-2.

**Disclaimer :** For Research Use or Further Manufacturing Only.

**Tainan Headquarter**

+886-6-2536677 +886-6-2531536

info@leadgene.com.tw

**Taipei Office**

+886-2-27065528