

## Human IL-28B, His Tag, E. coli

<b>Catalog Number</b>	LDG097PHE
<b>Package</b>	5 µg / 20 µg / 100 µg / Customized package

For full product information, images and publications, please visit [our website](#).



### Specifications

#### Species of Origin

Human

#### Affinity Tag

His Tag (C-term)

#### Purity

>95% as determined by SDS-PAGE analysis.

#### Activity

Measure by its ability to protect HepG2 cells infected with encephalomyocarditis (EMC) virus. The ED<sub>50</sub> for this effect is <5 ng/mL.

#### Form

Lyophilized

#### Expression system

Escherichia coli

#### Buffer

Lyophilized from a 0.2 µm filtered solution of PBS, pH 8.0.

#### Molecular weight

The protein has a calculated MW of 25.57 kDa. The protein migrates as 21 kDa under reducing condition (SDS-PAGE analysis).

#### Endotoxin level

<0.01 EU per 1 µg of the protein by the LAL method.

### Background

#### Tainan Headquarter

+886-6-2536677

bd@leadgene.com.tw

#### Innovation & Research Center

+886-2-27065528

#### CLD Center

+886-6-2536677

### Background

Interleukin-28B (IL-28B, now known as Interferon Lambda 3, IFN- $\lambda$ 3) is a 19.77 kDa member of type III IFN family with 176 amino acid residues. IL-28B is expressed by epithelial tissues. Cytokine with antiviral, antitumor and immunomodulatory activities. Able to activate JAK/STAT signaling pathway via binding its receptor IFNLR1 in epithelial cells.

### Uniprot ID

#Q8IZI9

### Synonyms

Cytokine Zcyto22, Interleukin-28B, IL-28B, Interleukin-28C, IL-28C, Interferon lambda-3

### Sequence Note

Val22-Val196

## Instruction

### Reconstitution

It is recommended to reconstitute the lyophilized protein in sterile H<sub>2</sub>O to a concentration of 200  $\mu$ g/mL and incubate the stock solution for at least 20 min to ensure sufficient re-dissolved.

### Stability & Storage

This product is stable after storage at:

- -20°C for 12 months in lyophilized state from date of receipt.
- -20°C or -80°C for 2 weeks under sterile conditions after reconstitution.

Avoid repeated freeze/thaw cycles.

### Shipping

The product is shipped with polar packs. Upon receipt, store it immediately at -20°C or lower for long term storage.

## Image

### Tainan Headquarter

+886-6-2536677

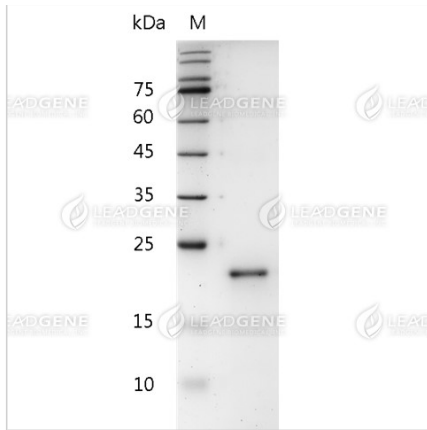
bd@leadgene.com.tw

### Innovation & Research Center

+886-2-27065528

### CLD Center

+886-6-2536677



SDS-PAGE analysis of recombinant human IL-28B.

**Disclaimer :** For Research Use or Further Manufacturing Only.