

Human IL-36RA, His Tag, E. coli

Catalog Number	LDG095PHE
Package	5 µg / 20 µg / 100 µg / Customized package

For full product information, images and publications, please visit [our website](#).



Specifications

Species of Origin

Human

Affinity Tag

His Tag (C-term)

Purity

>98% as determined by SDS-PAGE analysis.

Activity

Measure by its ability to inhibit IL-36 gamma-induced IL-8 secretion in PBMC cells. The ED₅₀ for this effect is <2 ng/mL in the presence of 500 ng/mL of recombinant human IL-36 gamma.

Form

Lyophilized

Expression system

Escherichia coli

Buffer

Lyophilized from a 0.2 µm filtered solution of PBS, pH 7.4.

Molecular weight

The protein has a calculated MW of 17.77 kDa. The protein migrates as 17 kDa under reducing condition (SDS-PAGE analysis).

Endotoxin level

<0.1 EU per 1 µg of the protein by the LAL method.

Background

Tainan Headquarter

+886-6-2536677

bd@leadgene.com.tw

Innovation & Research Center

+886-2-27065528

CLD Center

+886-6-2536677

Background

Interleukin 36 receptor antagonist (IL-36RA) is a 16.97 kDa member of IL-1 family with 155 amino acid residues. IL-1RA is expressed by lymphoid tissue, skin and secreted to blood. IL-36Ra functions as a receptor antagonist that inhibits the activation of IL-36R signaling and suppresses pro-inflammatory signaling.

Uniprot ID

#Q9UBH0

Synonyms

Interleukin-1-like protein 1, IL-1L1, Interleukin-1 receptor antagonist homolog 1, IL-1ra homolog 1, Interleukin-1 family member 5, IL-1F5, Interleukin-1 delta, IL-1 delta, Interleukin-1 HY1, IL-1HY1, IL-1-related protein 3, IL-1RP3, FIL1 delta, Interleukin-36 receptor antagonist protein

Sequence Note

Met1-Asp155

Instruction

Reconstitution

It is recommended to reconstitute the lyophilized protein in sterile H₂O to a concentration of 200 µg/mL and incubate the stock solution for at least 20 min to ensure sufficient re-dissolved.

Stability & Storage

This product is stable after storage at:

- -20°C for 12 months in lyophilized state from date of receipt.
- -20°C or -80°C for 1 month under sterile conditions after reconstitution.

Avoid repeated freeze/thaw cycles.

Shipping

The product is shipped with polar packs. Upon receipt, store it immediately at -20°C or lower for long term storage.

Image

Tainan Headquarter

+886-6-2536677

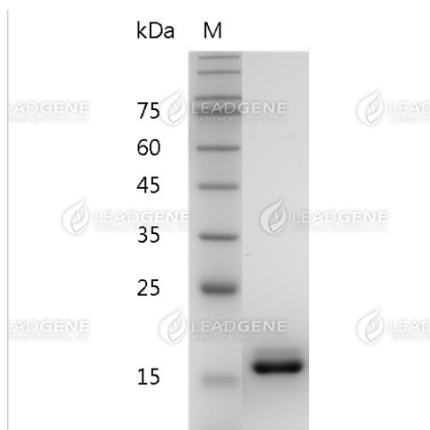
bd@leadgene.com.tw

Innovation & Research Center

+886-2-27065528

CLD Center

+886-6-2536677



SDS-PAGE analysis of recombinant human IL-36RA.

Disclaimer : For Research Use or Further Manufacturing Only.