

## Human IGF-II, His Tag, E. coli

**Catalog Number** LDG089PHE

**Package** 5 µg / 20 µg / 100 µg / Customized package

For full product information, images and publications, please visit [our website](#).



### Specifications

#### Species of Origin

Human

#### Affinity Tag

His Tag (N-term)

#### Purity

>98% as determined by SDS-PAGE analysis.

#### Activity

Measure by its ability to induce MCF-7 cells proliferation. The ED<sub>50</sub> for this effect is <3 ng/mL. The specific activity of recombinant human IGF-II is > 3x 10<sup>5</sup> IU/mg.

#### Form

Lyophilized

#### Expression system

Escherichia coli

#### Buffer

Lyophilized from a 0.2 µm filtered solution of PBS, pH 8.0.

#### Molecular weight

The protein has a calculated MW of 8.28 kDa. The protein migrates as 11 kDa under reducing condition (SDS-PAGE analysis).

#### Endotoxin level

<0.1 EU per 1 µg of the protein by the LAL method.

### Background

#### Tainan Headquarter

+886-6-2536677 +886-6-2531536

info@leadgene.com.tw

#### Taipei Office

+886-2-27065528

### Background

Insulin like Growth Factors 2 (IGF-II) is a 7.48 kDa member of the Insulin-like Growth Factors with 67 amino acid residues. IGF-II is mainly expressed from placenta, extravillous trophoblasts, leydig cells, syncytiotrophoblasts, cytotrophoblasts, peritubular cells. IGF-II regulating fetoplacental development and tissue differentiation. In adults, IGF-II signaling involves glucose metabolism in adipose tissue, skeletal muscle and liver. It also has important implications for metabolic disorders and cancer.

### Uniprot ID

#P01344

### Synonyms

Insulin-like Growth Factors II, Somatomedin-A, T3M-11-derived Growth Factors, Insulin-like Growth Factors II Ala-25 Del, Preptin

### Sequence Note

Ala25-Glu91

## Instruction

### Reconstitution

It is recommended to reconstitute the lyophilized protein in sterile H<sub>2</sub>O to a concentration not less than 200 µg/mL and incubate the stock solution for at least 20 min to ensure sufficient re-dissolved.

### Stability & Storage

This product is stable after storage at:

- -20°C for 12 months in lyophilized state from date of receipt.
- -20°C or -80°C for 2 weeks under sterile conditions after reconstitution.

Avoid repeated freeze/thaw cycles.

### Shipping

The product is shipped with polar packs. Upon receipt, store it immediately at -20°C or lower for long term storage.

## Image

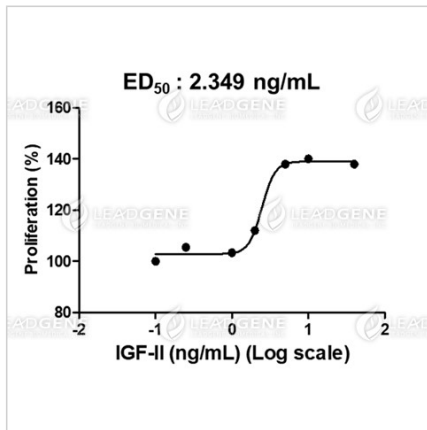
### Tainan Headquarter

+886-6-2536677 +886-6-2531536

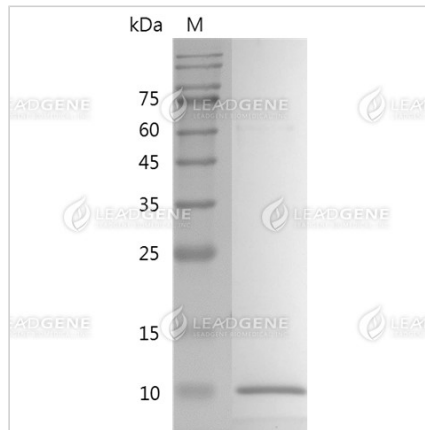
info@leadgene.com.tw

### Taipei Office

+886-2-27065528



Human IGF-II, His Tag, E. coli (LDG089PHE) induced MCF-7 cell proliferation, with the ED<sub>50</sub> at 2.349 ng/mL.



SDS-PAGE analysis of recombinant human IGF-II.

**Disclaimer :** For Research Use or Further Manufacturing Only.