

Mouse Midkine, His Tag, E. coli

Catalog Number LDG088PME

Package 5 µg / 20 µg / 100 µg / Customized package

For full product information, images and publications, please visit [our website](#).



Specifications

Species of Origin

Mouse

Affinity Tag

His Tag (C-term)

Purity

>98% as determined by SDS-PAGE analysis.

Endotoxin level

<0.1 EU per 1 µg of the protein by the LAL method.

Expression system

Escherichia coli

Buffer

Lyophilized from a 0.2 µm filtered solution of PBS, pH 7.4.

Molecular weight

The protein has a calculated MW of 14.02 kDa. The protein migrates about 17 kDa under reducing condition (SDS-PAGE analysis).

Form

Lyophilized

Background

Tainan Headquarter

+886-6-2536677 +886-6-2531536

info@leadgene.com.tw

Taipei Office

+886-2-27065528

Background

Midkine, also known as neurite growth-promoting factor 2 (NEGF2) is a member of a small family of secreted Growth Factors, furthermore high expression in embryo, and limb E14.5.

Mouse midkine shares 87% sequence identity with human midkine. Midkine is a 13.5 kDa protein containing 140 amino acids, which promotes angiogenesis, cell growth, migration, and gene expression of different cell types probably via a multiprotein receptor complex consisting of several molecules.

Uniprot ID

#P12025

Synonyms

Midkine 1 Publication, MK, Retanoic acid-responsive protein, Retinoic acid-induced differentiation factor

Sequence Note

Gly31-Val119

Instruction

Reconstitution

It is recommended to reconstitute the lyophilized protein in sterile H₂O to a concentration not less than 200 µg/mL and incubate the stock solution for at least 20 min to ensure sufficient re-dissolved.

Stability & Storage

This product is stable after storage at:

- -20°C for 12 months in lyophilized state from date of receipt.
- -20°C or -80°C for 1 month under sterile conditions after reconstitution.

Avoid repeated freeze/thaw cycles.

Shipping

The product is shipped with polar packs. Upon receipt, store it immediately at -20°C or lower for long term storage.

Tainan Headquarter

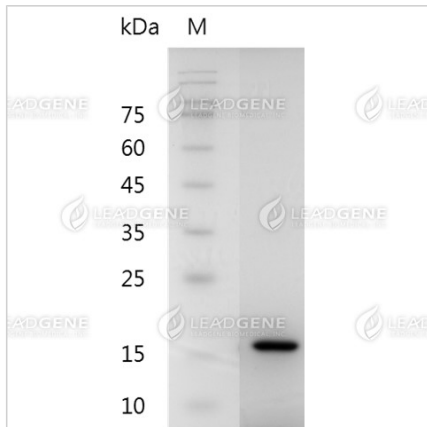
☎ +886-6-2536677 📠 +886-6-2531536

✉ info@leadgene.com.tw

Taipei Office

☎ +886-2-27065528

Image



SDS-PAGE analysis of
recombinant mouse Midkine.

Disclaimer : For Research Use or Further Manufacturing Only.

Tainan Headquarter

+886-6-2536677 +886-6-2531536

info@leadgene.com.tw

Taipei Office

+886-2-27065528