

## Human FGF-22, His-SUMO Tag, E. coli

<b>Catalog Number</b>	LDG086PHE
<b>Package</b>	5 µg / 20 µg / 100 µg / Customized package

For full product information, images and publications, please visit [our website](#).



### Specifications

#### Species of Origin

Human

#### Expression system

Escherichia coli

#### Affinity Tag

His-SUMO Tag (N-term)

#### Buffer

Lyophilized from a 0.2 µm filtered solution of PBS, pH 8.0.

#### Purity

>98% as determined by SDS-PAGE analysis.

#### Molecular weight

The protein has a calculated MW of 29.35 kDa. The protein migrates as 36 kDa under reducing condition (SDS-PAGE analysis).

#### Activity

Measure by its ability to induce 3T3 cells proliferation. The ED<sub>50</sub> for this effect is <2 ng/mL.

#### Endotoxin level

<0.1 EU per 1 µg of the protein by the LAL method.

#### Form

Lyophilized

### Background

#### Tainan Headquarter

+886-6-2536677

bd@leadgene.com.tw

#### Innovation & Research Center

+886-2-27065528

#### CLD Center

+886-6-2536677

### Background

Fibroblast Growth Factors-22 (FGF-22) is a 22.3 kDa member of the fibroblast Growth Factors with 209 amino acid residues. FGF-22 is expressed from brain, skin, horizontal cells, bipolar cells, rod photoreceptor cells, muller glia cells. Involving fasting response, glucose homeostasis, lipolysis, lipogenesis and hair development.

### Uniprot ID

#Q9HCT0

### Synonyms

Fibroblast Growth Factors 22

### Sequence Note

Thr23-Ser170

## Instruction

### Reconstitution

It is recommended to reconstitute the lyophilized protein in sterile H<sub>2</sub>O to a concentration of 200 µg/mL and incubate the stock solution for at least 20 min to ensure sufficient re-dissolved.

### Stability & Storage

This product is stable after storage at:

- -20°C for 12 months in lyophilized state from date of receipt.
- -20°C or -80°C for 1 month under sterile conditions after reconstitution.

Avoid repeated freeze/thaw cycles.

### Shipping

The product is shipped with polar packs. Upon receipt, store it immediately at -20°C or lower for long term storage.

## Image

### Tainan Headquarter

+886-6-2536677

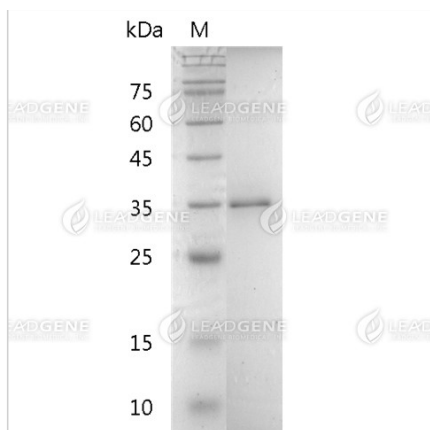
✉ [bd@leadgene.com.tw](mailto:bd@leadgene.com.tw)

### Innovation & Research Center

+886-2-27065528

### CLD Center

+886-6-2536677



SDS-PAGE analysis of recombinant human FGF-22.

**Disclaimer :** For Research Use or Further Manufacturing Only.