

Mouse MIF, His Tag, E. coli

Catalog Number	LDG084PME
Package	5 µg / 20 µg / 100 µg / Customized package

For full product information, images and publications, please visit [our website](#).



Specifications

Species of Origin

Mouse

Affinity Tag

His Tag (C-term)

Purity

>98% as determined by SDS-PAGE analysis.

Endotoxin level

<0.1 EU per 1 µg of the protein by the LAL method.

Expression system

Escherichia coli

Buffer

Lyophilized from a 0.2 µm filtered solution of PBS, pH 7.4.

Molecular weight

The protein has a calculated MW of 13.31 kDa. The protein migrates as 11-17 kDa under reducing condition (SDS-PAGE analysis).

Form

Lyophilized

Background

Background

Macrophage Migration Inhibitory Factor (MIF) is a 12 kDa cytokine with 115 amino acid residues. When MIF binding to CD74 and CD44, downstream signaling pathway (like ERK, AKT and MAPK) will be activated and cause p53 inhibition, cancer proliferation and invasion.

Synonyms

Macrophage migration inhibitory factor, MIF, Delayed early response protein 6, DER6, Glycosylation-inhibiting factor, GIF, L-dopachrome isomerase, L-dopachrome tautomerase, Phenylpyruvate tautomerase

Tainan Headquarter

+886-6-2536677

bd@leadgene.com.tw

Innovation & Research Center

+886-2-27065528

CLD Center

+886-6-2536677

Uniprot ID

#P34884

Sequence Note

Met1-Ala115

Instruction
Reconstitution

It is recommended to reconstitute the lyophilized protein in sterile H₂O to a concentration of 200 µg/mL and incubate the stock solution for at least 20 min to ensure sufficient re-dissolved.

Stability & Storage

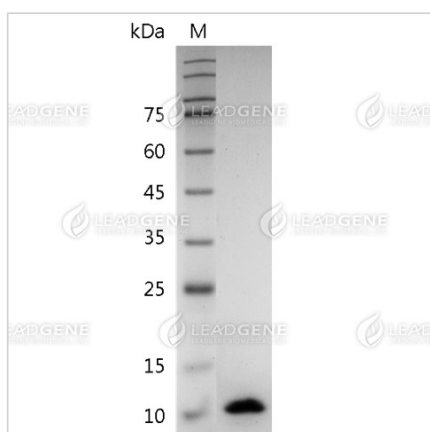
This product is stable after storage at:

- -20°C for 12 months in lyophilized state from date of receipt.
- -20°C or -80°C for 1 month under sterile conditions after reconstitution.

Avoid repeated freeze/thaw cycles.

Shipping

The product is shipped with polar packs. Upon receipt, store it immediately at -20°C or lower for long term storage.

Image


SDS-PAGE analysis of recombinant mouse MIF.

Disclaimer : For Research Use or Further Manufacturing Only.

Tainan Headquarter

☎ +886-6-2536677

✉ bd@leadgene.com.tw

Innovation & Research Center

☎ +886-2-27065528

CLD Center

☎ +886-6-2536677