

Mouse OX40L, His Tag, E. coli

| | |
|----------------|--|
| Catalog Number | LDG079PME |
| Package | 5 µg / 20 µg / 100 µg / Customized package |

For full product information, images and publications, please visit [our website](#).



Specifications

Species of Origin

Mouse

Affinity Tag

His Tag (N-term)

Purity

>95% as determined by SDS-PAGE analysis.

Activity

Measure by its ability to induce IL-2 secretion in mouse T cells in the presence of the anti-CD3 antibody. The ED₅₀ for this effect is <25 ng/mL.

Form

Lyophilized

Expression system

Escherichia coli

Buffer

Lyophilized from a 0.2 µm filtered solution of PBS, pH 7.4.

Molecular weight

The protein has a calculated MW of 17.68 kDa. The protein migrates as 17-25 kDa under reducing condition (SDS-PAGE analysis).

Endotoxin level

<0.1 EU per 1 µg of the protein by the LAL method.

Background

Tainan Headquarter

+886-6-2536677

bd@leadgene.com.tw

Innovation & Research Center

+886-2-27065528

CLD Center

+886-6-2536677

Background

OX40L is a 16.86 kDa tumor necrosis factor family protein with 150 amino acid residues. OX40L is mainly expressed from lymphoid tissue, and promotes T-cell proliferation, survival, activation and cytokine production through receptor binding on the surface of T cells (OX40).

Uniprot ID

#P43488

Synonyms

Tumor necrosis factor ligand superfamily member 4, OX40 ligand, OX40L

Sequence Note

Gln49-Leu198

Instruction**Reconstitution**

It is recommended to reconstitute the lyophilized protein in sterile H₂O to a concentration of 200 µg/mL and incubate the stock solution for at least 20 min to ensure sufficient re-dissolved.

Stability & Storage

This product is stable after storage at:

- -20°C for 12 months in lyophilized state from date of receipt.
- -20°C or -80°C for 1 month under sterile conditions after reconstitution.

Avoid repeated freeze/thaw cycles.

Shipping

The product is shipped with polar packs. Upon receipt, store it immediately at -20°C or lower for long term storage.

Image**Tainan Headquarter**

+886-6-2536677

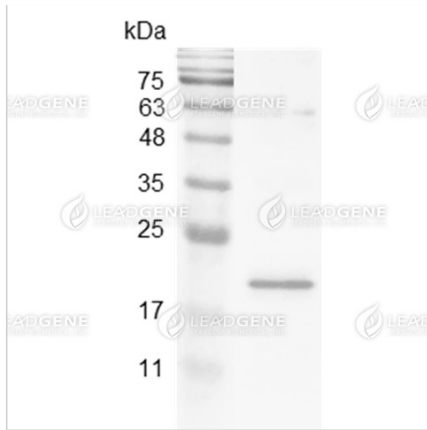
bd@leadgene.com.tw

Innovation & Research Center

+886-2-27065528

CLD Center

+886-6-2536677



SDS-PAGE analysis of recombinant mouse OX40L.

Disclaimer : For Research Use or Further Manufacturing Only.