

Mouse CD180, His Tag, CHO

Catalog Number	LDG076PMM
Package	5 µg / 20 µg / 100 µg / Customized package

For full product information, images and publications, please visit [our website](#).



Specifications

Species of Origin

Mouse

Affinity Tag

His Tag (C-term)

Purity

>95% as determined by SDS-PAGE analysis.

Endotoxin level

<0.1 EU per 1 µg of the protein by the LAL method.

Form

Lyophilized

Expression system

CHO

Buffer

Lyophilized from a 0.2 µm filtered solution of PBS, pH 7.4.

Molecular weight

The protein has a calculated 68.79 MW of kDa. The protein migrates as 36~100 kDa under reducing condition (SDS-PAGE analysis).

Mycoplasma

Not detected

Background

Background

CD180 is involved in B-cell activation and immune responses. It is a member of the Toll-like receptor family and is involved in modulating immune tolerance.

Synonyms

CD180 antigen, Lymphocyte antigen 78, Ly-78, Radioprotective 105 kDa protein, CD180

Tainan Headquarter

+886-6-2536677

bd@leadgene.com.tw

Innovation & Research Center

+886-2-27065528

CLD Center

+886-6-2536677

Uniprot ID

Q62192

Sequence Note

Thr21-Ser626

Instruction
Reconstitution

It is recommended to reconstitute the lyophilized protein in sterile H₂O to a concentration not less than 200 µg/mL and incubate the stock solution for at least 20 min to ensure sufficient re-dissolved.

Stability & Storage

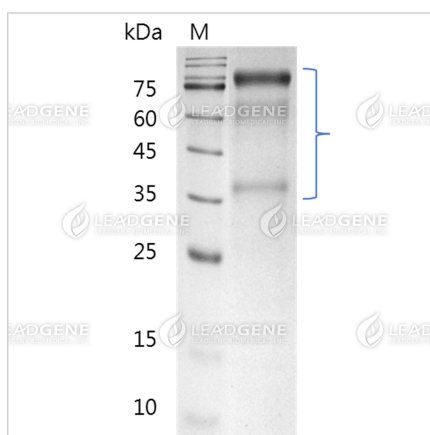
This product is stable after storage at:

- -20°C for 12 months in lyophilized state from date of receipt.
- -20°C or -80°C for 1 month under sterile conditions after reconstitution.

Avoid repeated freeze/thaw cycles.

Shipping

The product is shipped with polar packs. Upon receipt, store it immediately at -20°C or lower for long term storage.

Image


SDS-PAGE analysis of recombinant mouse CD180.

Disclaimer : For Research Use or Further Manufacturing Only.

Tainan Headquarter

+886-6-2536677

bd@leadgene.com.tw

Innovation & Research Center

+886-2-27065528

CLD Center

+886-6-2536677

Tainan Headquarter

☎ +886-6-2536677

✉ bd@leadgene.com.tw

Innovation & Research Center

☎ +886-2-27065528

CLD Center

☎ +886-6-2536677