

## Human IL-4, His Tag, CHO

<b>Catalog Number</b>	LDG075PHM
<b>Package</b>	5 µg / 20 µg / 100 µg / Customized package

For full product information, images and publications, please visit [our website](#).



### Specifications

#### Species of Origin

Human

#### Expression system

CHO

#### Affinity Tag

His Tag (C-term)

#### Buffer

Lyophilized from a 0.2 µm filtered solution of PBS, pH 7.4.

#### Purity

>80% as determined by SDS-PAGE analysis.

#### Molecular weight

The protein has a calculated MW of 15.79 kDa. The protein migrates as 15-21 kDa under reducing condition (SDS-PAGE analysis).

#### Endotoxin level

<0.1 EU per 1 µg of the protein by the LAL method.

#### Mycoplasma

Not detected.

#### Form

Lyophilized

### Background

#### Background

Interleukin-4 (IL-4) is a cytokine that promotes the differentiation of naive T cells into Th2 cells. It is critical in regulating allergic responses and humoral immunity and is involved in the pathogenesis of asthma and other allergic diseases.

#### Synonyms

Interleukin-4, B-cell stimulatory factor 1, BSF-1, Binetrakin, Lymphocyte stimulatory factor 1, Pitrakina

#### Tainan Headquarter

+886-6-2536677

bd@leadgene.com.tw

#### Innovation & Research Center

+886-2-27065528

#### CLD Center

+886-6-2536677

**Uniprot ID**

P05112

**Sequence Note**

Met1-Set153

**Instruction****Reconstitution**

It is recommended to reconstitute the lyophilized protein in sterile H<sub>2</sub>O to a concentration not less than 200 µg/mL and incubate the stock solution for at least 20 min to ensure sufficient re-dissolved.

**Stability & Storage**




This product is stable after storage at:

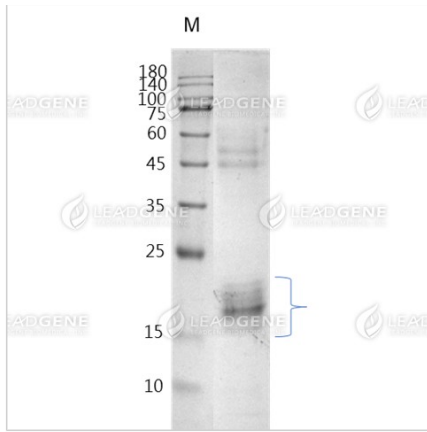
- -20°C for 12 months in lyophilized state from date of receipt.
- -20°C or -80°C for 1 month under sterile conditions after reconstitution.

Avoid repeated freeze/thaw cycles.

**Shipping**

The product is shipped with polar packs. Upon receipt, store it immediately at -20°C or lower for long term storage.

**Image****Tainan Headquarter** +886-6-2536677 [bd@leadgene.com.tw](mailto:bd@leadgene.com.tw)**Innovation & Research Center** +886-2-27065528**CLD Center** +886-6-2536677



SDS-PAGE analysis of recombinant human IL-4.

**Disclaimer :** For Research Use or Further Manufacturing Only.