

## Mouse HDGF, His Tag, E. coli

<b>Catalog Number</b>	LDG074PME
<b>Package</b>	5 µg / 20 µg / 100 µg / Customized package

For full product information, images and publications, please visit [our website](#).



### Specifications

#### Species of Origin

Mouse

#### Affinity Tag

His Tag (C-term)

#### Purity

>98% as determined by SDS-PAGE analysis.

#### Endotoxin level

<0.1 EU per 1 µg of the protein by the LAL method.

#### Expression system

Escherichia coli

#### Buffer

Lyophilized from a 0.2 µm filtered solution of PBS, pH 7.4.

#### Molecular weight

The protein has a calculated MW of 27.08 kDa. The protein migrates as 35-48 kDa under reducing condition (SDS-PAGE analysis).

#### Form

Lyophilized

### Background

#### Background

Heparin Binding Growth Factors (HDGF) is a 27.6 kDa hepatoma-derived Growth Factors with 246 amino acid residues. HDGF is mainly expressed from mitochondria and proteasome. Functionally, it is a potent mitogen, stimulating the growth of vascular smooth muscle cells, hepatoma cells and endothelial cells, acting as a transcriptional repressor. HDGF is expressed in a variety of cancers.

#### Synonyms

Hepatoma-derived Growth Factors, HDGF

**Uniprot ID**

#P51859

**Sequence Note**

Met1-Leu237

**Instruction**
**Reconstitution**

It is recommended to reconstitute the lyophilized protein in sterile H<sub>2</sub>O to a concentration not less than 200 µg/mL and incubate the stock solution for at least 20 min to ensure sufficient re-dissolved.

**Stability & Storage**

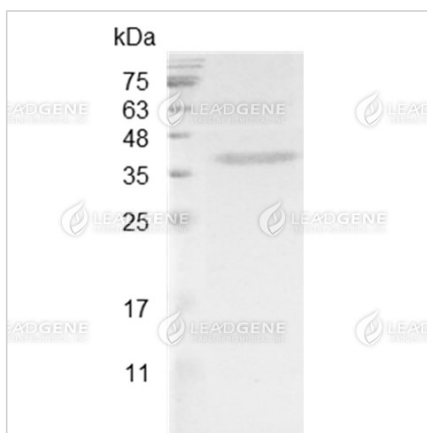
This product is stable after storage at:

- -20°C for 12 months in lyophilized state from date of receipt.
- -20°C or -80°C for 1 month under sterile conditions after reconstitution.

Avoid repeated freeze/thaw cycles.

**Shipping**

The product is shipped with polar packs. Upon receipt, store it immediately at -20°C or lower for long term storage.

**Image**


SDS-PAGE analysis of recombinant mouse HDGF.

**Disclaimer** : For Research Use or Further Manufacturing Only.

**Tainan Headquarter**

+886-6-2536677

bd@leadgene.com.tw

**Innovation & Research Center**

+886-2-27065528

**CLD Center**

+886-6-2536677

**Tainan Headquarter**

☎ +886-6-2536677

✉ [bd@leadgene.com.tw](mailto:bd@leadgene.com.tw)

**Innovation & Research Center**

☎ +886-2-27065528

**CLD Center**

☎ +886-6-2536677