

## Human CD326, His Tag, E. coli

<b>Catalog Number</b>	LDG066PHE
<b>Package</b>	5 µg / 20 µg / 100 µg / Customized package

For full product information, images and publications, please visit [our website](#).



### Specifications

#### Species of Origin

Human

#### Affinity Tag

His Tag (C-term)

#### Purity

>95% as determined by SDS-PAGE analysis.

#### Activity

Measure by the ability of the immobilized protein to support the adhesion of the 3T3 cells. The ED<sub>50</sub> for this effect is 0.2-1.7 ng/mL.

#### Form

Lyophilized

#### Expression system

Escherichia coli

#### Buffer

Lyophilized from a 0.2 µm filtered solution of PBS, pH 8.0.

#### Molecular weight

The protein has a calculated MW of 28.36 kDa. The protein migrates as 30 kDa under reducing condition (SDS-PAGE analysis).

#### Endotoxin level

<0.1 EU per 1 µg of the protein by the LAL method.

### Background

#### Tainan Headquarter

+886-6-2536677

bd@leadgene.com.tw

#### Innovation & Research Center

+886-2-27065528

#### CLD Center

+886-6-2536677

### Background

Human CD326 also called epithelial cellular adhesion molecule (EpCAM), which is a 28 kDa protein containing 242 amino acid residues. Human CD326 is a transmembrane glycoprotein, which is a marker of cancer. CD326 induces the expression of c-myc, cyclins A & E and e-fabp which is involved the cancer cell proliferation and migration

### Uniprot ID

#P16422

### Synonyms

Adenocarcinoma-associated antigen, Cell surface glycoprotein Trop-1, Epithelial glycoprotein , EGP, Epithelial glycoprotein 314 , EGP314, hEGP314, KS 1 /4 antigen, KSA, Major gastrointestinal tumor-associated protein GA733-2, Tumor-associated calcium signal transducer 1, Epithelial cell adhesion molecule, Ep-CAM

### Sequence Note

Gln24-Lys265

## Instruction

### Reconstitution

It is recommended to reconstitute the lyophilized protein in sterile H<sub>2</sub>O to a concentration of 200 µg/mL and incubate the stock solution for at least 20 min to ensure sufficient re-dissolved.

### Stability & Storage

This product is stable after storage at:

- -20°C for 12 months in lyophilized state from date of receipt.
- -20°C or -80°C for 1 month under sterile conditions after reconstitution.

Avoid repeated freeze/thaw cycles.

### Shipping

The product is shipped with polar packs. Upon receipt, store it immediately at -20°C or lower for long term storage.

## Image

### Tainan Headquarter

+886-6-2536677

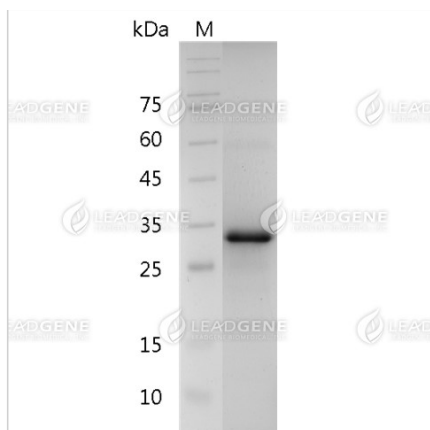
bd@leadgene.com.tw

### Innovation & Research Center

+886-2-27065528

### CLD Center

+886-6-2536677



SDS-PAGE analysis of recombinant human CD326.

**Disclaimer :** For Research Use or Further Manufacturing Only.