

## Human Activin B, His Tag, E. coli

<b>Catalog Number</b>	LDG064PHE
<b>Package</b>	5 µg / 20 µg / 100 µg / Customized package

For full product information, images and publications, please visit [our website](#).



### Specifications

#### Species of Origin

Human

#### Affinity Tag

His Tag (C-term)

#### Purity

>98% as determined by SDS-PAGE analysis.

#### Activity

Measure by its ability to induce hemoglobin expression in K562 cells. The ED<sub>50</sub> for this effect is <0.7 ng/mL. The specific activity of recombinant human Activin B is > 1.5 x 10<sup>6</sup> IU/mg.

#### Form

Lyophilized

#### Expression system

Escherichia coli

#### Buffer

Lyophilized from a 0.2 µm filtered solution of PBS, pH 8.0.

#### Molecular weight

The protein has a calculated MW of 13.75 kDa. The protein migrates as 14 kDa under reducing condition (SDS-PAGE analysis).

#### Endotoxin level

<0.1 EU per 1 µg of the protein by the LAL method.

### Background

#### Tainan Headquarter

+886-6-2536677

bd@leadgene.com.tw

#### Innovation & Research Center

+886-2-27065528

#### CLD Center

+886-6-2536677

### Background

Activin B is the cytokine of the TGF-beta family, which is a 13 kDa protein containing 115 amino acid residues. Activin B has the wide variety of biological function including stem cell differentiation, inflammation, bone remodeling and neural development. They also have a role in regulation of FSH secretion. Activin B induces the phosphorylation of Smad which binds the smad binding element.

### Uniprot ID

#P09529

### Synonyms

Inhibin beta B chain, Activin beta-B chain, INHBB

### Sequence Note

Gly293-Ala407

## Instruction

### Reconstitution

It is recommended to reconstitute the lyophilized protein in sterile H<sub>2</sub>O to a concentration not less than 200 µg/mL and incubate the stock solution for at least 20 min to ensure sufficient re-dissolved.

### Stability & Storage

This product is stable after storage at:

- -20°C for 12 months in lyophilized state from date of receipt.
- -20°C or -80°C for 1 month under sterile conditions after reconstitution.

Avoid repeated freeze/thaw cycles.

### Shipping

The product is shipped with polar packs. Upon receipt, store it immediately at -20°C or lower for long term storage.

## Image

### Tainan Headquarter

+886-6-2536677

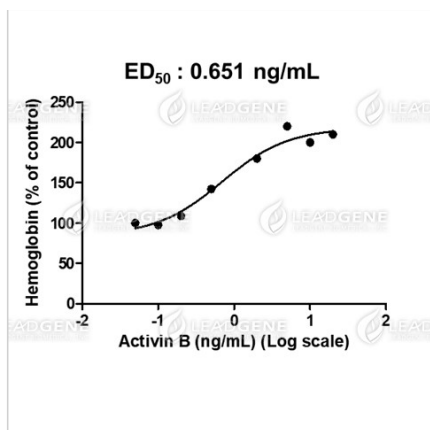
✉ [bd@leadgene.com.tw](mailto:bd@leadgene.com.tw)

### Innovation & Research Center

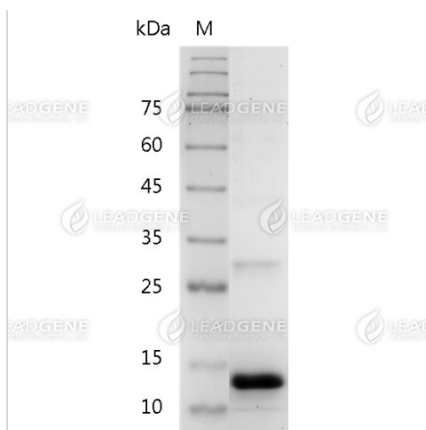
+886-2-27065528

### CLD Center

+886-6-2536677



Human Activin B, His Tag, E. coli (LDG064PHE) induced hemoglobin expression in K562 cells, with the ED50 at 0.651 ng/mL.



SDS-PAGE analysis of recombinant human Activin B.

**Disclaimer :** For Research Use or Further Manufacturing Only.