

## Mouse TNF Beta, His Tag, E. coli

Catalog Number	LDG062PME
Package	5 µg / 20 µg / 100 µg / Customized package

For full product information, images and publications, please visit [our website](#).



### Specifications

#### Species of Origin

Mouse

#### Affinity Tag

His Tag (N-term)

#### Purity

>98% as determined by SDS-PAGE analysis.

#### Activity

Measure by its ability to induce cytotoxicity in L929 cells in the presence of actinomycin D. The ED<sub>50</sub> for this effect is <30 ng/mL.

#### Form

Lyophilized

#### Expression system

Escherichia coli

#### Buffer

Lyophilized from a 0.2 µm filtered solution of PBS, pH 8.0.

#### Molecular weight

The protein has a calculated MW of 19.36 kDa. The protein migrates as 11-17 kDa under reducing condition (SDS-PAGE analysis).

#### Endotoxin level

<0.1 EU per 1 µg of the protein by the LAL method.

### Background

#### Tainan Headquarter

+886-6-2536677

bd@leadgene.com.tw

#### Innovation & Research Center

+886-2-27065528

#### CLD Center

+886-6-2536677

### Background

Tumor Necrosis Factor Beta (TNF beta) or lymphotoxin-alpha (LT- $\alpha$ ) is a 19 kDa tumor necrosis factor family protein with 171 amino acid residues. TNF beta is mainly expressed from lymphocytes, and mediates variety of inflammatory, immunostimulatory, and antiviral responses. TNF beta also involves development in secondary lymphoid organs. It is cytotoxic for different tumor cells in vitro and in vivo.

### Uniprot ID

#P09225

### Synonyms

Lymphotoxin-alpha, LT-alpha, TNF-beta, Tumor necrosis factor ligand superfamily member 1

### Sequence Note

Leu34-Leu202

## Instruction

### Reconstitution

It is recommended to reconstitute the lyophilized protein in sterile H<sub>2</sub>O to a concentration not less than 200  $\mu$ g/mL and incubate the stock solution for at least 20 min to ensure sufficient re-dissolved.

### Stability & Storage

This product is stable after storage at:

- -20°C for 12 months in lyophilized state from date of receipt.
- -20°C or -80°C for 1 month under sterile conditions after reconstitution.

Avoid repeated freeze/thaw cycles.

### Shipping

The product is shipped with polar packs. Upon receipt, store it immediately at -20°C or lower for long term storage.

## Image

### Tainan Headquarter

+886-6-2536677

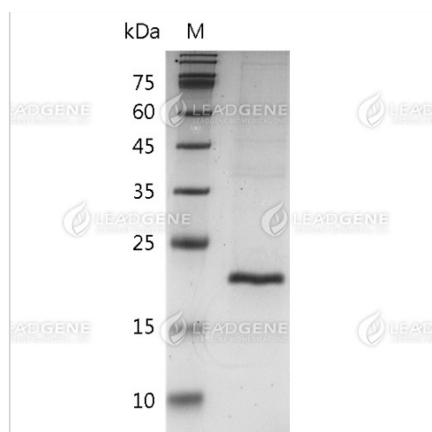
✉ [bd@leadgene.com.tw](mailto:bd@leadgene.com.tw)

### Innovation & Research Center

+886-2-27065528

### CLD Center

+886-6-2536677



SDS-PAGE analysis of recombinant mouse TNF Beta.

**Disclaimer :** For Research Use or Further Manufacturing Only.