

## Human CD22, His Tag, HEK293

<b>Catalog Number</b>	LDG062PHM
<b>Package</b>	5 µg / 20 µg / 100 µg / Customized package

For full product information, images and publications, please visit [our website](#).



### Specifications

#### Species of Origin

Human

#### Expression system

HEK293

#### Affinity Tag

His Tag (C-term)

#### Buffer

Lyophilized from a 0.2 µm filtered solution of PBS, pH 7.4.

#### Purity

>95% as determined by SDS-PAGE analysis.

#### Molecular weight

The protein has a calculated MW of 75.98 kDa. The protein migrates as 90-110 kDa under reducing condition (SDS-PAGE analysis).

#### Activity

Measured by the ability of the immobilized protein to support the adhesion of human red blood cells. The ED<sub>50</sub> for this effect is <0.5 µg/mL.

#### Endotoxin level

<0.1 EU per 1 µg of the protein by the LAL method.

#### Mycoplasma

Not detected.

#### Form

Lyophilized.

### Background

#### Tainan Headquarter

+886-6-2536677

bd@leadgene.com.tw

#### Innovation & Research Center

+886-2-27065528

#### CLD Center

+886-6-2536677

### Background

Human cluster of Differentiation 22 (CD22) is a B cell-specific transmembrane protein that regulates B cell function, including activation and signaling. It serves as an inhibitory receptor, modulating immune responses and maintaining tolerance to prevent autoimmunity.

### Uniprot ID

P20273

### Synonyms

B-cell receptor CD22, B-lymphocyte cell adhesion molecule, BL-CAM, Sialic acid-binding Ig-like lectin 2, Siglec-2, T-cell surface antigen Leu-14, CD22

### Sequence Note

Asp 20 - Arg 687

## Instruction

### Reconstitution

It is recommended to reconstitute the lyophilized protein in sterile H<sub>2</sub>O to a concentration not less than 200 µg/mL and incubate the stock solution for at least 20 min to ensure sufficient re-dissolved.

### Stability & Storage

This product is stable after storage at:

- -20°C for 12 months in lyophilized state from date of receipt.
- -20°C or -80°C for 1 month under sterile conditions after reconstitution.

Avoid repeated freeze/thaw cycles.

### Shipping

The product is shipped with polar packs. Upon receipt, store it immediately at -20°C or lower for long term storage.

## Image

### Tainan Headquarter

+886-6-2536677

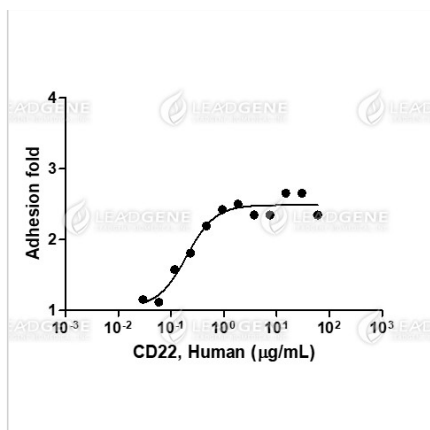
bd@leadgene.com.tw

### Innovation & Research Center

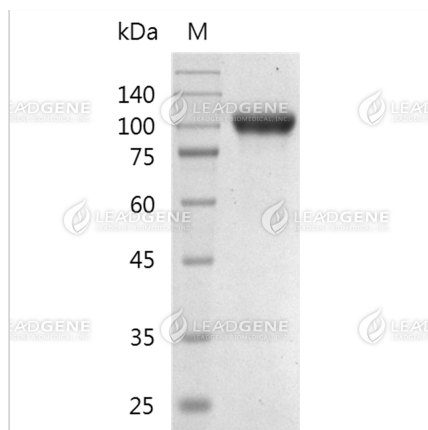
+886-2-27065528

### CLD Center

+886-6-2536677



Activity analysis of recombinant Human CD22, His Tag, HEK293. Measured by the ability of the immobilized protein to support the adhesion of human red blood cells. The ED50 for this effect is <0.5 µg/mL.



SDS-PAGE analysis of recombinant human CD22.

**Disclaimer :** For Research Use or Further Manufacturing Only.