

Human GIF, His Tag, E. coli

Catalog Number	LDG061PHE
Package	5 µg / 20 µg / 100 µg / Customized package

For full product information, images and publications, please visit [our website](#).



Specifications

Species of Origin

Human

Affinity Tag

His Tag (C-term)

Purity

>98% as determined by SDS-PAGE analysis.

Endotoxin level

<0.1 EU per 1 µg of the protein by the LAL method.

Expression system

Escherichia coli

Buffer

Lyophilized from a 0.2 µm filtered solution of PBS, pH 8.0.

Molecular weight

The protein has a calculated MW of 46.23 kDa. The protein migrates as 43 kDa under reducing condition (SDS-PAGE analysis).

Form

Lyophilized

Background

Background

Human Gastric intrinsic factor (GIF) is an intrinsic factor of the eukaryotic cobalamin family. Gastric intrinsic factor is a 44 kDa protein containing 380 amino acid residues. It is secreted from the parietal cells in gastric mucosa. Gastric intrinsic factor plays a major role in absorption and transportation of cobalamin and Cbl. It could form the complex with Vit.B12 that avoid the destroy of Vit.B12.

Synonyms

Cobalamin binding intrinsic factor, Gastric intrinsic factor, Intrinsic factor

Uniprot ID

#P27352

Sequence Note

Met1-Tyr417

Instruction
Reconstitution

It is recommended to reconstitute the lyophilized protein in sterile H₂O to a concentration of 200 µg/mL and incubate the stock solution for at least 20 min to ensure sufficient re-dissolved.

Stability & Storage

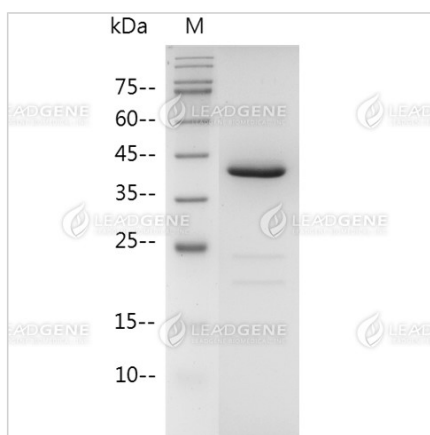
This product is stable after storage at:

- -20°C for 12 months in lyophilized state from date of receipt.
- -20°C or -80°C for 1 month under sterile conditions after reconstitution.

Avoid repeated freeze/thaw cycles.


Shipping

The product is shipped with polar packs. Upon receipt, store it immediately at -20°C or lower for long term storage.


Image



SDS-PAGE analysis of recombinant human GIF.

Disclaimer : For Research Use or Further Manufacturing Only.

Tainan Headquarter
 +886-6-2536677

 bd@leadgene.com.tw

Innovation & Research Center
 +886-2-27065528

CLD Center
 +886-6-2536677

Tainan Headquarter

☎ +886-6-2536677

✉ bd@leadgene.com.tw

Innovation & Research Center

☎ +886-2-27065528

CLD Center

☎ +886-6-2536677