

## Mouse IL-38, His Tag, E. coli

<b>Catalog Number</b>	LDG060PME
<b>Package</b>	5 µg / 20 µg / 100 µg / Customized package

For full product information, images and publications, please visit [our website](#).



### Specifications

#### Species of Origin

Mouse

#### Affinity Tag

His Tag (C-term)

#### Purity

>98% as determined by SDS-PAGE analysis.

#### Endotoxin level

<0.1 EU per 1 µg of the protein by the LAL method.

#### Expression system

Escherichia coli

#### Buffer

Lyophilized from a 0.2 µm filtered solution of PBS, pH 7.4.

#### Molecular weight

The protein has a calculated MW of 17.89 kDa.  
The protein migrates as 17-25 kDa under reducing condition (SDS-PAGE analysis).

#### Form

Lyophilized

### Background

#### Tainan Headquarter

+886-6-2536677

bd@leadgene.com.tw

#### Innovation & Research Center

+886-2-27065528

#### CLD Center

+886-6-2536677

### Background

Interleukin 38 (IL-38) is a 16.87 kDa cytokine with 152 amino acid residues and a member of the interleukin-1 (IL-1) family. IL-38 is primarily secreted from basal epithelia of the skin and B cells of the tonsil, spleen, and thymus. It plays essential roles in inflammation and host defense by mediating NF- $\kappa$ B, AP1, and JNK signaling pathways when IL-38 binds to the receptors like IL1RAPL1 and IL-36R. In addition, IL-38 participates in down-regulating cell proliferation, migration, and up-regulating IL-6 and IL-10.

### Uniprot ID

#Q8R459

### Synonyms

Interleukin-1 family member 10, IL-1F10

### Sequence Note

Met1-Arg152

## Instruction

### Reconstitution

It is recommended to reconstitute the lyophilized protein in sterile H<sub>2</sub>O to a concentration of 200  $\mu$ g/mL and incubate the stock solution for at least 20 min to ensure sufficient re-dissolved.

### Stability & Storage

This product is stable after storage at:

- -20°C for 12 months in lyophilized state from date of receipt.
- -20°C or -80°C for 1 month under sterile conditions after reconstitution.

Avoid repeated freeze/thaw cycles.

### Shipping

The product is shipped with polar packs. Upon receipt, store it immediately at -20°C or lower for long term storage.

## Image

### Tainan Headquarter

+886-6-2536677

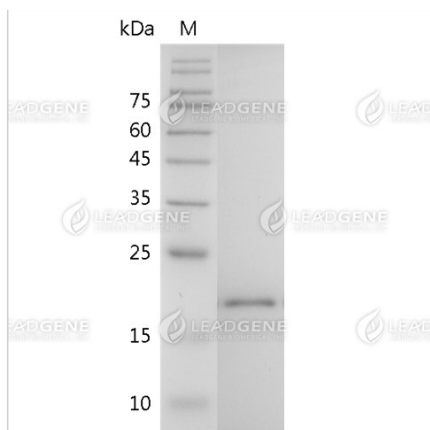
bd@leadgene.com.tw

### Innovation & Research Center

+886-2-27065528

### CLD Center

+886-6-2536677



SDS-PAGE analysis of recombinant mouse IL-38.

**Disclaimer :** For Research Use or Further Manufacturing Only.