

Human RAGE, His Tag, E. coli

Catalog Number	LDG054PHE
Package	5 µg / 20 µg / 100 µg / Customized package

For full product information, images and publications, please visit [our website](#).



Specifications

Species of Origin

Human

Affinity Tag

His Tag (C-term)

Purity

>98% as determined by SDS-PAGE analysis.

Endotoxin level

<0.1 EU per 1 µg of the protein by the LAL method.

Expression system

Escherichia coli

Buffer

Lyophilized from a 0.2 µm filtered solution of PBS, pH 8.0.

Molecular weight

The protein has a calculated MW of 30.94 kDa. The protein migrates as 40 kDa under reducing condition (SDS-PAGE analysis).

Form

Lyophilized

Background

Background

Receptor for advanced glycation endproducts (RAGE) is a 35 kDa transmembrane receptor of the immunoglobulin super family. The mature RAGE has three main parts, consisting of extracellular, transmembrane, and cytosolic regions. A central mechanism by which ligand-RAGE interaction mediates cell stress and upregulates inflammatory pathways is via activation of signal transduction pathways.

Synonyms

Advanced glycosylation end product-specific receptor, Receptor for advanced glycosylation end products

Uniprot ID

#Q15109

Sequence Note

Aal23-Ser120

Instruction
Reconstitution

It is recommended to reconstitute the lyophilized protein in sterile H₂O to a concentration of 200 µg/mL and incubate the stock solution for at least 20 min to ensure sufficient re-dissolved.

Stability & Storage

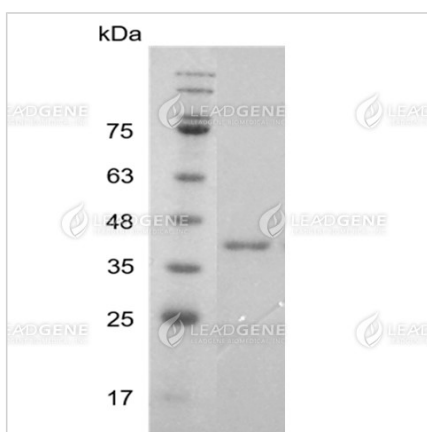
This product is stable after storage at:

- -20°C for 12 months in lyophilized state from date of receipt.
- -20°C or -80°C for 1 month under sterile conditions after reconstitution.

Avoid repeated freeze/thaw cycles.

Shipping

The product is shipped with polar packs. Upon receipt, store it immediately at -20°C or lower for long term storage.

Image


SDS-PAGE analysis of recombinant human RAGE.

Disclaimer : For Research Use or Further Manufacturing Only.

Tainan Headquarter

+886-6-2536677

bd@leadgene.com.tw

Innovation & Research Center

+886-2-27065528

CLD Center

+886-6-2536677

Tainan Headquarter

☎ +886-6-2536677

✉ bd@leadgene.com.tw

Innovation & Research Center

☎ +886-2-27065528

CLD Center

☎ +886-6-2536677