

Mouse IL-30, His Tag, E. coli

Catalog Number LDG053PME

Package 5 µg / 20 µg / 100 µg / Customized package

For full product information, images and publications, please visit [our website](#).



Specifications

Species of Origin

Mouse

Affinity Tag

His Tag (C-term)

Purity

>98% as determined by SDS-PAGE analysis.

Activity

Measure by its ability to protect HepG2 cells infected with encephalomyocarditis (EMC) virus. The ED₅₀ for this effect is <5 ng/mL.

Form

Lyophilized

Expression system

Escherichia coli

Buffer

Lyophilized from a 0.2 µm filtered solution of PBS, pH 7.4.

Molecular weight

The protein has a calculated MW of 24.51 kDa. The protein migrates about 25 kDa under reducing condition (SDS-PAGE analysis).

Endotoxin level

<0.1 EU per 1 µg of the protein by the LAL method.

Background

Tainan Headquarter

+886-6-2536677 +886-6-2531536

info@leadgene.com.tw

Taipei Office

+886-2-27065528

Background

Interleukin 30 (IL-30) forms one chain of the heterodimeric cytokine called interleukin 27 (IL-27), thus it is also called IL27 p28, it predicts a molecular mass of 24.9 kDa. IL-30, the p28 subunit that forms IL-27 together with EBI3 and is also known as IL-27 p28 or IL-27A, has been considered a surrogate to represent IL-27. It was initially thought to be an IL-12-like cytokine promoting Th1 immunity because of its ability to induce T-bet and IL-12R β 2 expression through STAT1 activation during Th1 differentiation.

Uniprot ID

#Q8K3I6

Synonyms

Interleukin-27 subunit alpha, IL-27 subunit alpha, IL-27-A, IL27-A, p28

Sequence Note

Phe29-Ser234

Instruction

Reconstitution

It is recommended to reconstitute the lyophilized protein in sterile H₂O to a concentration not less than 200 μ g/mL and incubate the stock solution for at least 20 min to ensure sufficient re-dissolved.

Stability & Storage

This product is stable after storage at:

- -20°C for 12 months in lyophilized state from date of receipt.
- -20°C or -80°C for 1 month under sterile conditions after reconstitution.

Avoid repeated freeze/thaw cycles.

Shipping

The product is shipped with polar packs. Upon receipt, store it immediately at -20°C or lower for long term storage.

Image

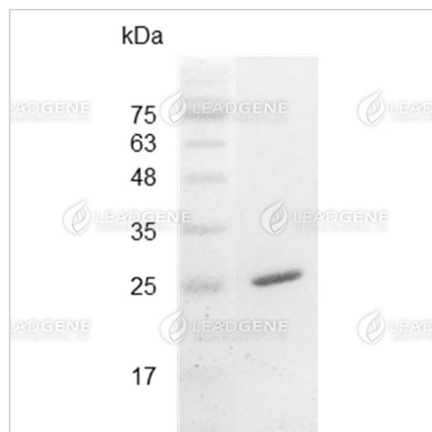
Tainan Headquarter

+886-6-2536677 +886-6-2531536

info@leadgene.com.tw

Taipei Office

+886-2-27065528



SDS-PAGE analysis of
recombinant mouse IL-30.

Disclaimer : For Research Use or Further Manufacturing Only.