

## Human CXCL12 (aa 24-88), His Tag, E. coli

**Catalog Number** LDG053PHE

**Package** 5 µg / 20 µg / 100 µg / Customized package

For full product information, images and publications, please visit [our website](#).



### Specifications

#### Species of Origin

Human

#### Affinity Tag

His Tag (C-term)

#### Purity

>98% as determined by SDS-PAGE analysis.

#### Activity

Measure by its ability to chemoattract BaF3 cells transfected with human CXCR4. The ED<sub>50</sub> for this effect is <0.5 ng/mL.

#### Form

Lyophilized

#### Expression system

Escherichia coli

#### Buffer

Lyophilized from a 0.2 µm filtered solution containing 20 mM sodium citrate, 0.2 M NaCl, pH 4.5.

#### Molecular weight

The protein has a calculated MW of 8.55 kDa. The protein migrates as 10 kDa under reducing condition (SDS-PAGE analysis).

#### Endotoxin level

<0.1 EU per 1 µg of the protein by the LAL method.

### Background

#### Tainan Headquarter

+886-6-2536677 +886-6-2531536

info@leadgene.com.tw

#### Taipei Office

+886-2-27065528

**Background**

C-X-C motif chemokine 12 (CXCL12) also named stromal cell-derived factor 1 (SDF-1), which is a chemokine of the intercrine alpha family. CXCL12 is a 19.5kDa protein containing 167 amino acid residues. The function of CXCL12 include the hematopoiesis, angiogenesis embryogenesis, inflammation and angiogenesis. CXCL12 activated by the IL-1, TNF or lipopolysaccharide and induce the immune response in leukocytes.

**Uniprot ID**

#P48061

**Synonyms**

Stromal cell-derived factor 1, SDF-1, C-X-C motif chemokine 12, Intercrine reduced in hepatomas, IRH, hIRH, Pre-B cell growth-stimulating factor, PBSF, SDF-1-beta, 3-72, SDF-1-alpha, 3-67

**Sequence Note**

Val24-Asn88

**Instruction****Reconstitution**

It is recommended to reconstitute the lyophilized protein in sterile H<sub>2</sub>O to a concentration not less than 200 µg/mL and incubate the stock solution for at least 20 min to ensure sufficient re-dissolved.

**Stability & Storage**

This product is stable after storage at:

- -20°C for 12 months in lyophilized state from date of receipt.
- -20°C or -80°C for 1 month under sterile conditions after reconstitution.

Avoid repeated freeze/thaw cycles.

**Shipping**

The product is shipped with polar packs. Upon receipt, store it immediately at -20°C or lower for long term storage.

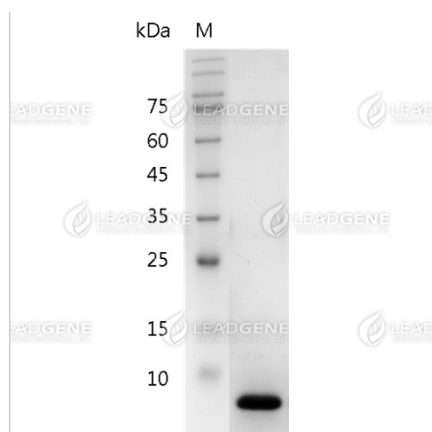
**Image****Tainan Headquarter**

+886-6-2536677 +886-6-2531536

info@leadgene.com.tw

**Taipei Office**

+886-2-27065528



SDS-PAGE analysis of  
 recombinant human CXCL12 (aa  
 24-88).

**Disclaimer :** For Research Use or Further Manufacturing Only.

#### Tainan Headquarter

+886-6-2536677 +886-6-2531536

info@leadgene.com.tw

#### Taipei Office

+886-2-27065528