

Human MIF, His Tag, E. coli

Catalog Number	LDG052PHE
Package	5 µg / 20 µg / 100 µg / Customized package

For full product information, images and publications, please visit [our website](#).



Specifications

Species of Origin

Human

Affinity Tag

His Tag (C-term)

Purity

>98% as determined by SDS-PAGE analysis.

Endotoxin level

<0.1 EU per 1 µg of the protein by the LAL method.

Expression system

Escherichia coli

Buffer

Lyophilized from a 0.2 µm filtered solution of PBS, pH 8.0.

Molecular weight

The protein has a calculated MW of 13.28 kDa. The protein migrates as 10 kDa under reducing condition (SDS-PAGE analysis).

Form

Lyophilized

Background

Background

Macrophage migration inhibitory factor (MIF) is a pleiotropic inflammatory mediator, predicts a molecular mass of 12.5 kDa. MIF binds to CD74, a type II transmembrane protein, inducing its phosphorylation and the recruitment of CD44, which then activates SRC family non-receptor tyrosine kinases, leading to ERK1/2 phosphorylation.

Synonyms

Macrophage migration inhibitory factor, Glycosylation-inhibiting factor, L-dopachrome isomerase, L-dopachrome tautomerase, Phenylpyruvate tautomerase

Uniprot ID

#P14174

Sequence Note

Met1-Ala115

Instruction
Reconstitution

It is recommended to reconstitute the lyophilized protein in sterile H₂O to a concentration of 200 µg/mL and incubate the stock solution for at least 20 min to ensure sufficient re-dissolved.

Stability & Storage

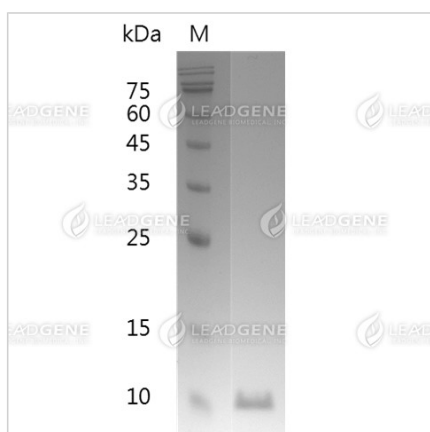
This product is stable after storage at:

- -20°C for 12 months in lyophilized state from date of receipt.
- -20°C or -80°C for 1 month under sterile conditions after reconstitution.

Avoid repeated freeze/thaw cycles.


Shipping

The product is shipped with polar packs. Upon receipt, store it immediately at -20°C or lower for long term storage.


Image



SDS-PAGE analysis of recombinant human MIF.

Disclaimer : For Research Use or Further Manufacturing Only.

Tainan Headquarter
 +886-6-2536677

 bd@leadgene.com.tw

Innovation & Research Center
 +886-2-27065528

CLD Center
 +886-6-2536677

Tainan Headquarter

☎ +886-6-2536677

✉ bd@leadgene.com.tw

Innovation & Research Center

☎ +886-2-27065528

CLD Center

☎ +886-6-2536677