

## Human TGF Beta 1, His Tag, E. coli

<b>Catalog Number</b>	LDG051PHE
<b>Package</b>	5 µg / 20 µg / 100 µg / Customized package

For full product information, images and publications, please visit [our website](#).



### Specifications

#### Species of Origin

Human

#### Affinity Tag

His Tag (C-term)

#### Purity

>98% as determined by SDS-PAGE analysis.

#### Activity

Measure by its ability to inhibit the IL-4 dependent proliferation in TF-1 cells. The ED<sub>50</sub> for this effect is < 0.1 ng/mL. The specific activity of recombinant human TGF beat 1 is approximately > 1 x 10<sup>7</sup> IU/mg.

#### Form

Lyophilized

#### Expression system

Escherichia coli

#### Buffer

Lyophilized from a 0.2 µm filtered solution containing 20 mM sodium citrate and 0.2 M NaCl, pH 4.5.

#### Molecular weight

The protein has a calculated MW of 13.7 kDa. The protein migrates as 13 kDa under reducing condition (SDS-PAGE analysis).

#### Endotoxin level

<0.1 EU per 1 µg of the protein by the LAL method.

### Background

#### Tainan Headquarter

+886-6-2536677

bd@leadgene.com.tw

#### Innovation & Research Center

+886-2-27065528

#### CLD Center

+886-6-2536677

### Background

The transforming Growth Factors beta (TGF beta) family of cytokines are ubiquitous, multifunctional, and essential to survival. They play the central roles in growth, development, inflammation, repair, and host immunity. The mammalian TGF beta isoforms (TGF beta 1, beta 2 and beta 3) are secreted as potential precursors and possess a variety of cell surface receptors and produces at least two mediate signal transductions.

### Uniprot ID

#P01137

### Synonyms

Transforming Growth Factors beta-1 proprotein

### Sequence Note

Ala279-Ser390

## Instruction

### Reconstitution

It is recommended to reconstitute the lyophilized protein in sterile H<sub>2</sub>O to a concentration not less than 200 µg/mL and incubate the stock solution for at least 20 min to ensure sufficient re-dissolved. In some experiments, it recommends to add 10 mM HCl when reconstitute lyophilized protein.

### Stability & Storage

This product is stable after storage at:

- -20°C for 12 months in lyophilized state from date of receipt.
- -20°C or -80°C for 1 month under sterile conditions after reconstitution.

Avoid repeated freeze/thaw cycles.

### Shipping

The product is shipped with polar packs. Upon receipt, store it immediately at -20°C or lower for long term storage.

## Image

### Tainan Headquarter

+886-6-2536677

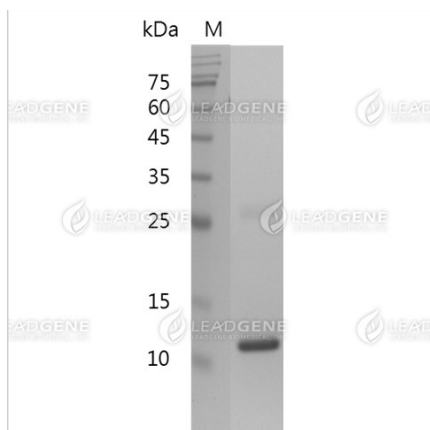
bd@leadgene.com.tw

### Innovation & Research Center

+886-2-27065528

### CLD Center

+886-6-2536677



SDS-PAGE analysis of recombinant human TGF beta 1.

**Disclaimer :** For Research Use or Further Manufacturing Only.