

Human IL-36 Beta, His Tag, E. coli

Catalog Number	LDG040PHE
Package	5 µg / 20 µg / 100 µg / Customized package

For full product information, images and publications, please visit [our website](#).



Specifications

Species of Origin

Human

Affinity Tag

His Tag (C-term)

Purity

>98% as determined by SDS-PAGE analysis.

Activity

Measure by its ability to induce IL-8 secretion in human PBMCs. The ED₅₀ for this effect is <0.2 ng/mL.

Form

Lyophilized

Expression system

Escherichia coli

Buffer

Lyophilized from a 0.2 µm filtered solution of PBS, pH 7.4.

Molecular weight

The protein has a calculated MW of 18.17 kDa. The protein migrates as 18 kDa under reducing condition (SDS-PAGE analysis).

Endotoxin level

<0.1 EU per 1 µg of the protein by the LAL method.

Background

Tainan Headquarter

+886-6-2536677

bd@leadgene.com.tw

Innovation & Research Center

+886-2-27065528

CLD Center

+886-6-2536677

Background

Interleukin-36 beta (IL-36 β) is an 18 kDa cytokine with 154 amino acid residues. IL-36 β , the ligand of IL-36R, is expressed in keratinocytes and plays a significant role in inflammatory responses. IL-36 β regulates biological functions like the differentiation of T cells. Moreover, IL-36 β recruits neutrophils via inducing the expression of cytokines and chemokines, such as IL-17C, granulocyte colony-stimulating factor (G-CSF), IL-8, CXCL-1, and tumor necrosis factor (TNF).

Uniprot ID

#NP_775270.1

Synonyms

Interleukin-36 beta, FIL1 eta, Interleukin-1 eta, IL-1 eta, Interleukin-1 family member 8, IL-1F8, Interleukin-1 homolog 2, IL-1H2

Sequence Note

Arg5-Glu157

Instruction

Reconstitution

It is recommended to reconstitute the lyophilized protein in sterile H₂O to a concentration of 200 μ g/mL and incubate the stock solution for at least 20 min to ensure sufficient re-dissolved.

Stability & Storage

This product is stable after storage at:

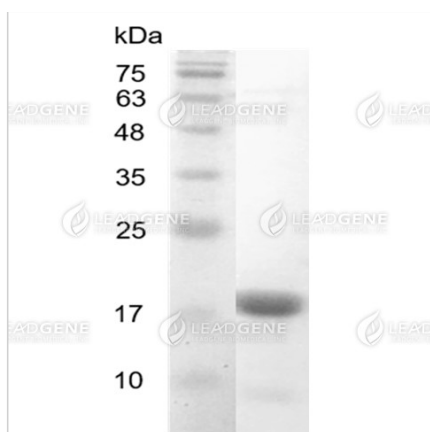
- -20°C for 12 months in lyophilized state from date of receipt.
- -20°C or -80°C for 1 month under sterile conditions after reconstitution.

Avoid repeated freeze/thaw cycles.

Shipping

The product is shipped with polar packs. Upon receipt, store it immediately at -20°C or lower for long term storage.

Image



SDS-PAGE analysis of recombinant
human IL-36 Beta.

Disclaimer : For Research Use or Further Manufacturing Only.