

Human Metapneumovirus (MPV) Nucleocapsid Protein, His Tag, E. coli

Catalog Number LDG035PVE

Package 5 µg / 20 µg / 100 µg / Customized package

For full product information, images and publications, please visit [our website](#).



Specifications

Species of Origin

Human

Affinity Tag

His Tag (C-term)

Purity

>95% as determined by SDS-PAGE analysis.

Endotoxin level

Not detected

Form

Lyophilized

Expression system

Escherichia coli

Buffer

Lyophilized from a 0.2 µm filtered solution of PBS, pH 7.4

Molecular weight

The protein has a calculated MW of 44.35 kDa. The protein migrates as 44 kDa under reducing condition (SDS-PAGE analysis).

Mycoplasma

Not detected

Background

Tainan Headquarter

+886-6-2536677

bd@leadgene.com.tw

Innovation & Research Center

+886-2-27065528

CLD Center

+886-6-2536677

Background

Human Metapneumovirus (hMPV), a Paramyxoviridae family member, causes respiratory infections. The hMPV Nucleocapsid (N) protein is the primary RNA-binding protein in the viral genome, crucial for the viral life cycle. It binds to viral RNA, forming a nucleocapsid that protects it from degradation. The N protein also regulates viral replication and transcription by being part of the RNA polymerase complex, facilitating viral RNA synthesis.

Uniprot ID

Q6WBA1

Synonyms

Metapneumovirus N Protein, MPV N Protein, Nucleocapsid (N) Protein of Human Metapneumovirus, hMPV Nucleocapsid (N), hMPV Nucleoprotein (N), Human Metapneumovirus N Protein, Nucleoprotein (hMPV), hMPV NP (Nucleocapsid Protein), hMPV Nucleo Protein, hMPV Core Protein

Sequence Note

Met1-Glu394

Instruction

Reconstitution

It is recommended to reconstitute the lyophilized protein in sterile H₂O to a concentration of 200 µg/mL and incubate the stock solution for at least 20 min to ensure sufficient re-dissolved.

Stability & Storage

This product is stable after storage at:

- -20°C for 12 months in lyophilized state from date of receipt.
- -20°C or -80°C for 1 month under sterile conditions after reconstitution.

Avoid repeated freeze/thaw cycles.

Shipping

The product is shipped with polar packs. Upon receipt, store it immediately at -20°C or lower for long term storage.

Image

Tainan Headquarter

+886-6-2536677

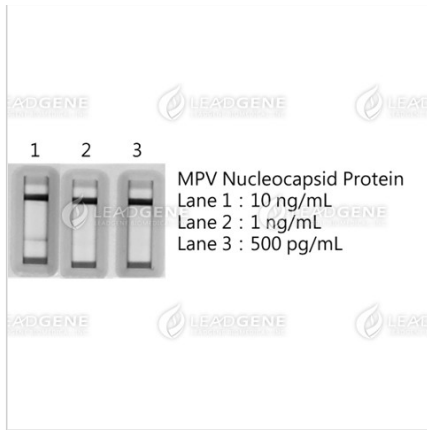
bd@leadgene.com.tw

Innovation & Research Center

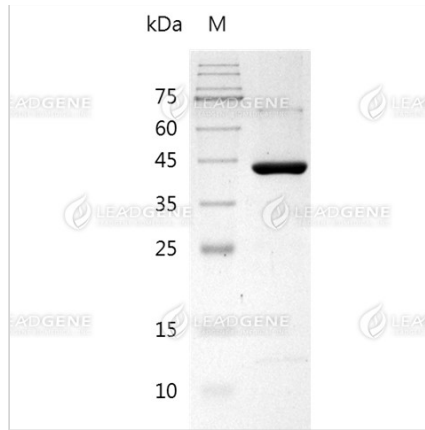
+886-2-27065528

CLD Center

+886-6-2536677



Testing for Human Metapneumovirus (MPV) Nucleocapsid Protein, His Tag, E. coli with the Human Metapneumovirus Nucleocapsid Protein Antigen Rapid Test. Human Metapneumovirus (MPV) Nucleocapsid Protein, His Tag, E. coli can be recognized by the Human Metapneumovirus Nucleocapsid Protein Antigen Rapid Test, with a minimum detection limit of 1 ng/mL.



SDS-PAGE analysis of recombinant human metapneumovirus (MPV) nucleocapsid protein.

Disclaimer : For Research Use or Further Manufacturing Only.