

Human MSLN (296-580), His Tag, CHO

Catalog Number	LDG035PHM
Package	5 µg / 20 µg / 100 µg / Customized package

For full product information, images and publications, please visit [our website](#).



Specifications

Species of Origin

Human

Affinity Tag

His Tag (C-term)

Purity

>95% as determined by SDS-PAGE analysis.

Endotoxin level

<0.1 EU per 1 µg of the protein by the LAL method.

Form

Lyophilized

Expression system

CHO

Buffer

Lyophilized from a 0.2 µm filtered solution of PBS, pH 7.4.

Molecular weight

The protein has a calculated MW of 32.99 kDa. The protein migrates as 30-45 kDa under reducing condition (SDS-PAGE analysis).

Mycoplasma

Not detected

Background

Tainan Headquarter

+886-6-2536677

bd@leadgene.com.tw

Innovation & Research Center

+886-2-27065528

CLD Center

+886-6-2536677

Background

MSLN (Mesothelin) protein, a cell surface glycoprotein, is highly expressed in various cancers, including mesothelioma, ovarian cancer, and pancreatic cancer. It promotes cancer cell proliferation, invasion, and metastasis through interactions with other proteins in the tumor microenvironment. MSLN also serves as a potential diagnostic and prognostic biomarker for these cancers. Targeting MSLN with monoclonal antibodies or immunotherapies shows promise in cancer treatment. Additionally, MSLN-targeted therapies for drug delivery and imaging are being explored. Understanding MSLN's roles in cancer progression is crucial for developing effective diagnostic tools and therapeutic strategies against MSLN-expressing tumors.

Uniprot ID

AAH09272

Synonyms

Mesothelin, CAK1 antigen, Pre-pro-megakaryocyte-potentiating factor

Sequence Note

Glu296-Gly580

Instruction

Reconstitution

It is recommended to reconstitute the lyophilized protein in 4 mM HCl to a concentration not less than 200 µg/mL and incubate the stock solution for at least 20 min to ensure sufficient re-dissolved.

Stability & Storage

This product is stable after storage at:

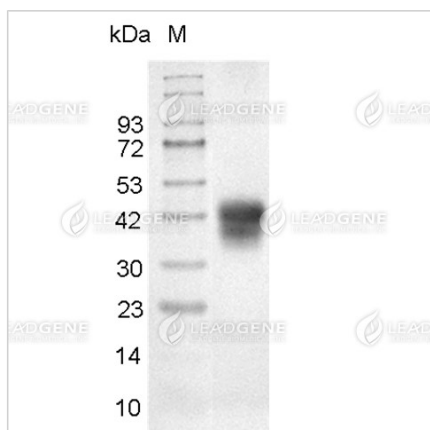
- -20°C for 12 months in lyophilized state from date of receipt.
- -20°C or -80°C for 1 month under sterile conditions after reconstitution.

Avoid repeated freeze/thaw cycles.

Shipping

The product is shipped with polar packs. Upon receipt, store it immediately at -20°C or lower for long term storage.

Image



SDS-PAGE analysis of recombinant human MSLN.

Disclaimer : For Research Use or Further Manufacturing Only.