

## Human IL-31, His Tag, E. coli

<b>Catalog Number</b>	LDG035PHE
<b>Package</b>	5 µg / 20 µg / 100 µg / Customized package

For full product information, images and publications, please visit [our website](#).



### Specifications

#### Species of Origin

Human

#### Expression system

Escherichia coli

#### Affinity Tag

His Tag (C-term)

#### Buffer

Lyophilized from a 0.2 µm filtered solution of PBS, pH 8.0.

#### Purity

>98% as determined by SDS-PAGE analysis.

#### Molecular weight

The protein has a calculated MW of 16.78 kDa. The protein migrates as 18 kDa under reducing condition (SDS-PAGE analysis).

#### Activity

Measured by its ability to induce A549 cells proliferation. The ED<sub>50</sub> for this effect is < 40 ng/mL.

#### Endotoxin level

<0.1 EU per 1 µg of the protein by the LAL method.

#### Form

Lyophilized

### Background

#### Tainan Headquarter

+886-6-2536677

bd@leadgene.com.tw

#### Innovation & Research Center

+886-2-27065528

#### CLD Center

+886-6-2536677

### Background

Interleukin 31 (IL-31) is an 18 kDa cytokine with 142 amino acid residues. IL-31 is mainly secreted from activated CD4+ T cells and binds to a receptor called IL-31RA. Upon binding to 31RA, IL-31 activates several signal pathways like MAPK, PI3K/AKT, and Jak/STAT pathways. It is critical in regulating many biological functions, such as cell proliferation, hematopoiesis, induction of cytokines, inflammation, and immune response.

### Uniprot ID

#Q6EBC2

### Synonyms

Interleukin-31

### Sequence Note

Ser24-Thr164

## Instruction

### Reconstitution

It is recommended to reconstitute the lyophilized protein in sterile H<sub>2</sub>O to a concentration of 200 µg/mL and incubate the stock solution for at least 20 min to ensure sufficient re-dissolved.

### Stability & Storage

This product is stable after storage at:

- -20°C for 12 months in lyophilized state from date of receipt.
- -20°C or -80°C for 1 month under sterile conditions after reconstitution.

Avoid repeated freeze/thaw cycles.

### Shipping

The product is shipped with polar packs. Upon receipt, store it immediately at -20°C or lower for long term storage.

## Image

### Tainan Headquarter

+886-6-2536677

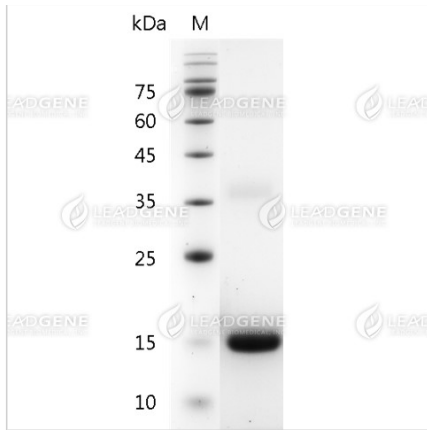
✉ [bd@leadgene.com.tw](mailto:bd@leadgene.com.tw)

### Innovation & Research Center

+886-2-27065528

### CLD Center

+886-6-2536677



SDS-PAGE analysis of recombinant human IL-31.

**Disclaimer :** For Research Use or Further Manufacturing Only.