

## Human Metapneumovirus (MPV) Matrix Protein, His Tag, E. coli

<b>Catalog Number</b>	LDG034PVE
<b>Package</b>	5 µg / 20 µg / 100 µg / Customized package

For full product information, images and publications, please visit [our website](#).



### Specifications

#### Species of Origin

Human

#### Affinity Tag

His Tag (C-term)

#### Purity

>95% as determined by SDS-PAGE analysis.

#### Endotoxin level

Not detected

#### Form

Lyophilized

#### Expression system

Escherichia coli

#### Buffer

Lyophilized from a 0.2 µm filtered solution of PBS, pH 7.4

#### Molecular weight

The protein has a calculated MW of 28.42 kDa.  
The protein migrates as 27-33 kDa under reducing condition (SDS-PAGE analysis).

#### Mycoplasma

Not detected

### Background

#### Tainan Headquarter

+886-6-2536677

bd@leadgene.com.tw

#### Innovation & Research Center

+886-2-27065528

#### CLD Center

+886-6-2536677

### Background

Human Metapneumovirus (hMPV), a Paramyxoviridae family member, causes respiratory infections. The Matrix (M) protein is essential for viral assembly and budding, shaping virion morphology. X-ray crystallography revealed that hMPV M protein forms two dimers and has a high-affinity  $\text{Ca}^{2+}$  binding site, with a secondary lower-affinity site identified through molecular simulations. These sites stabilize M protein, and their conservation across human pneumoviruses suggests calcium's role in viral assembly.

### Uniprot ID

Q6WB99

### Synonyms

hMPV M Protein, Metapneumovirus M Protein Human, Metapneumovirus M Protein, Matrix Protein of hMPV, hMPV Matrix Protein, Paramyxovirus Matrix Protein, Metapneumovirus Structural Protein M

### Sequence Note

Met1-Arg254

## Instruction

### Reconstitution

It is recommended to reconstitute the lyophilized protein in sterile  $\text{H}_2\text{O}$  to a concentration of 200  $\mu\text{g/mL}$  and incubate the stock solution for at least 20 min to ensure sufficient re-dissolved.

### Stability & Storage

This product is stable after storage at:

- $-20^{\circ}\text{C}$  for 12 months in lyophilized state from date of receipt.
- $-20^{\circ}\text{C}$  or  $-80^{\circ}\text{C}$  for 1 month under sterile conditions after reconstitution.

Avoid repeated freeze/thaw cycles.

### Shipping

The product is shipped with polar packs. Upon receipt, store it immediately at  $-20^{\circ}\text{C}$  or lower for long term storage.

## Image

### Tainan Headquarter

+886-6-2536677

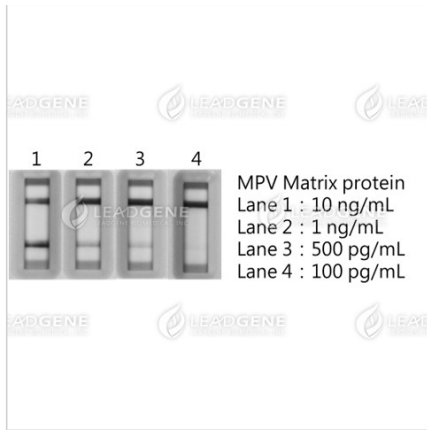
✉ [bd@leadgene.com.tw](mailto:bd@leadgene.com.tw)

### Innovation & Research Center

+886-2-27065528

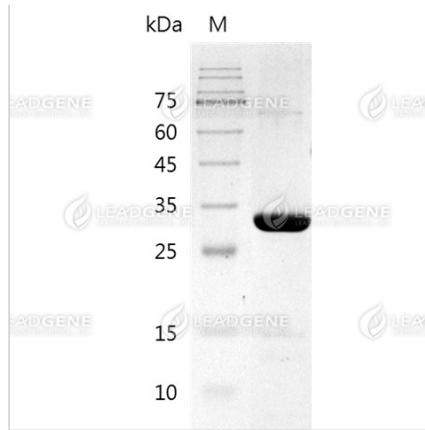
### CLD Center

+886-6-2536677



Testing for Human Metapneumovirus (MPV) Matrix Protein, His Tag, E. coli with the Human Metapneumovirus Matrix Protein Antigen Rapid Test (Uncut Sheet).

Human Metapneumovirus (MPV) Matrix Protein, His Tag, E. coli can be recognized by the Human Metapneumovirus Matrix Protein Antigen Rapid Test (Uncut Sheet), with a minimum detection limit of 100 pg/mL.



SDS-PAGE analysis of recombinant human metapneumovirus (MPV) matrix protein.

**Disclaimer :** For Research Use or Further Manufacturing Only.